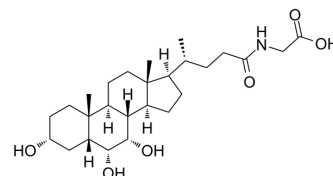


Glycohyocholic acid

| | |
|--------------------|--|
| Cat. No.: | HY-122141 |
| CAS No.: | 32747-08-3 |
| Molecular Formula: | C ₂₆ H ₄₃ NO ₆ |
| Molecular Weight: | 465.62 |
| Target: | Endogenous Metabolite |
| Pathway: | Metabolic Enzyme/Protease |
| Storage: | Powder -20°C 3 years In solvent -80°C 6 months -20°C 1 month |



SOLVENT & SOLUBILITY

| | | | | | | |
|---|--|---|------|-----------|------------|------------|
| In Vitro | DMSO : 100 mg/mL (214.77 mM; Need ultrasonic) | | | | | |
| | Preparing Stock Solutions | <div><div>Solvent</div><div>Concentration</div></div> | Mass | 1 mg | 5 mg | 10 mg |
| | | 1 mM | | 2.1477 mL | 10.7384 mL | 21.4767 mL |
| | | 5 mM | | 0.4295 mL | 2.1477 mL | 4.2953 mL |
| | | 10 mM | | 0.2148 mL | 1.0738 mL | 2.1477 mL |
| Please refer to the solubility information to select the appropriate solvent. | | | | | | |
| In Vivo | 1. Add each solvent one by one: 10% DMSO >> 40% PEG300 >> 5% Tween-80 >> 45% saline Solubility: ≥ 2.5 mg/mL (5.37 mM); Clear solution | | | | | |
| | 2. Add each solvent one by one: 10% DMSO >> 90% (20% SBE-β-CD in saline) Solubility: ≥ 2.5 mg/mL (5.37 mM); Clear solution | | | | | |
| | 3. Add each solvent one by one: 10% DMSO >> 90% corn oil Solubility: ≥ 2.5 mg/mL (5.37 mM); Clear solution | | | | | |
| | | | | | | |

BIOLOGICAL ACTIVITY

| | |
|-------------|---|
| Description | Glycohyocholic acid(GHCA) is a glycine-conjugated form of the primary bile acid hyocholic acid ^[1] . |
|-------------|---|

REFERENCES

[1]. Guo L, et al. Plasma metabolomic profiles enhance precision medicine for volunteers of normal health. Proc Natl Acad Sci U S A. 2015 Sep 1;112(35):E4901-10.

Caution: Product has not been fully validated for medical applications. For research use only.

Tel: 609-228-6898

Fax: 609-228-5909

E-mail: tech@MedChemExpress.com

Address: 1 Deer Park Dr, Suite Q, Monmouth Junction, NJ 08852, USA