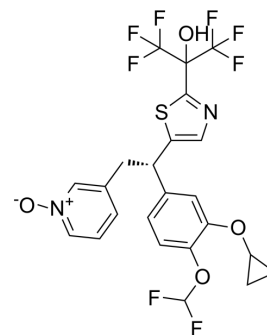


L-869298

Cat. No.:	HY-122167
CAS No.:	362718-73-8
Molecular Formula:	C ₂₃ H ₁₈ F ₈ N ₂ O ₄ S
Molecular Weight:	570.45
Target:	Phosphodiesterase (PDE)
Pathway:	Metabolic Enzyme/Protease
Storage:	Please store the product under the recommended conditions in the Certificate of Analysis.



BIOLOGICAL ACTIVITY

Description	L-869298 is a potent and selective PDE4 inhibitor with an IC ₅₀ of 0.5 nM for PDE4A. L-869298 shows less active against hERG potassium channel ^[1] .
IC ₅₀ & Target	PDE4A 0.5 nM (IC ₅₀)

REFERENCES

[1]. Richard W Friesen, et al. Optimization of a tertiary alcohol series of phosphodiesterase-4 (PDE4) inhibitors: structure-activity relationship related to PDE4 inhibition and human ether-a-go-go related gene potassium channel binding affinity. J Med Chem. 2003 Jun 5;46(12):2413-26.

Caution: Product has not been fully validated for medical applications. For research use only.

Tel: 609-228-6898

Fax: 609-228-5909

E-mail: tech@MedChemExpress.com

Address: 1 Deer Park Dr, Suite Q, Monmouth Junction, NJ 08852, USA