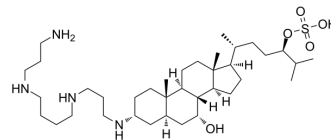


MSI-1701

Cat. No.:	HY-12219B		
CAS No.:	390808-64-7		
Molecular Formula:	C ₃₇ H ₇₂ N ₄ O ₅ S		
Molecular Weight:	685.06		
Target:	Others		
Pathway:	Others		
Storage:	Powder	-20°C	3 years
		4°C	2 years
	In solvent	-80°C	6 months
		-20°C	1 month



BIOLOGICAL ACTIVITY

Description	MSI-1701 is an analogue of MSI-1436 which can control weight gain and blood glucose level extracted from patent US 7410959 B1.
In Vivo	Analogues that differ from MSI-1436 at only a single stereocenter, such as MSI-1701 (the polyamine at C-3) or MSI-1777 (the methyl at C-20) exhibit significantly reduced activity, while MSI-1673 (the OH at C-7) is completely inactive ^[1] . MCE has not independently confirmed the accuracy of these methods. They are for reference only.

PROTOCOL

Animal Administration ^[1]	Experiments are performed using age-matched (4 to 5 weeks old) male mice provided food and water ad lib. Mice corresponding to a single experimental cohort are housed together in a single cage. Animals are used 1 week after arrival. Drug dosing is conducted with 10 mg/kg of each compound (including MSI-1701) via the i.p. route every 3 days for 4 doses, beginning on day 0 ^[1] . MCE has not independently confirmed the accuracy of these methods. They are for reference only.
---	---

REFERENCES

[1]. Michael Zasloff, et al. Therapeutic uses for aminosterol compounds. US 7410959 B1.

Caution: Product has not been fully validated for medical applications. For research use only.

Tel: 609-228-6898

Fax: 609-228-5909

E-mail: tech@MedChemExpress.com

Address: 1 Deer Park Dr, Suite Q, Monmouth Junction, NJ 08852, USA