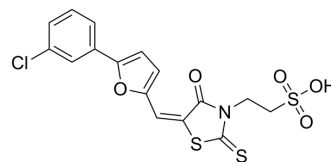


## Sortin2

Cat. No.:	HY-122245
CAS No.:	372972-39-9
Molecular Formula:	C <sub>16</sub> H <sub>12</sub> ClNO <sub>5</sub> S <sub>3</sub>
Molecular Weight:	429.92
Target:	Others
Pathway:	Others
Storage:	Please store the product under the recommended conditions in the Certificate of Analysis.



### BIOLOGICAL ACTIVITY

#### Description

Sortin2 is a synthetic compound. Sortin2 can affect protein targeting to the vacuole in *Saccharomyces cerevisiae*<sup>[1]</sup>.

### REFERENCES

[1]. Norambuena L, et al. Identification of cellular pathways affected by Sortin2, a synthetic compound that affects protein targeting to the vacuole in *Saccharomyces cerevisiae*. *BMC Chem Biol.* 2008 Jan 7;8:1.

**Caution: Product has not been fully validated for medical applications. For research use only.**

Tel: 609-228-6898

Fax: 609-228-5909

E-mail: [tech@MedChemExpress.com](mailto:tech@MedChemExpress.com)

Address: 1 Deer Park Dr, Suite Q, Monmouth Junction, NJ 08852, USA