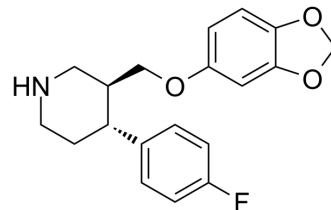


Paroxetine

Cat. No.:	HY-122272
CAS No.:	61869-08-7
Molecular Formula:	C ₁₉ H ₂₀ FNO ₃
Molecular Weight:	329.37
Target:	Serotonin Transporter; Adrenergic Receptor
Pathway:	Neuronal Signaling; GPCR/G Protein
Storage:	4°C, protect from light * In solvent : -80°C, 6 months; -20°C, 1 month (protect from light)



BIOLOGICAL ACTIVITY

Description

Paroxetine, a phenylpiperidine derivative, is a potent and selective serotonin reuptake inhibitor (SSRI). Paroxetine is a very weak inhibitor of norepinephrine (NE) uptake but it is still more potent at this site than the other SSRIs^[1].

REFERENCES

[1]. M Bourin, et al. Paroxetine: a review. CNS Drug Rev. Spring 2001;7(1):25-47

Caution: Product has not been fully validated for medical applications. For research use only.

Tel: 609-228-6898

Fax: 609-228-5909

E-mail: tech@MedChemExpress.com

Address: 1 Deer Park Dr, Suite Q, Monmouth Junction, NJ 08852, USA