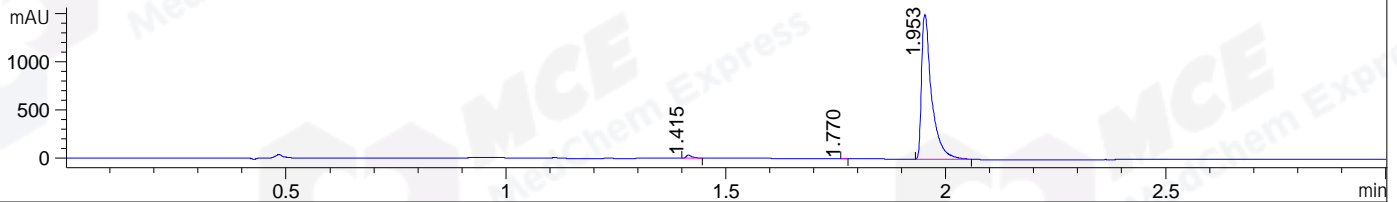
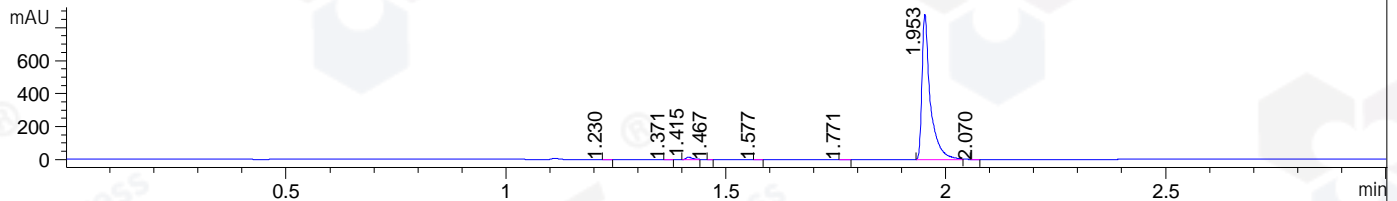


File ..\DATA\2019\20190307\548\CPK2019-306-20858.D Tgt Mass (CHM):  
 Injection Date : 7 Mar 19 10:41 am +0800 Seq. Line : 14  
 Sample Name : CPK2019-306-20858 Location : P2-C-04  
 Acq. Operator : LQ\_1052 Inj : 1  
 Spec. Reported : MS Integration Inj Volume : 1 ul  
 Acq. Method : D:\Chem32\1\data\2019\20190307\548\1-POS-3MIN-1.M  
 Analysis Method : D:\CHEM32\1\DATA\2019\20190307\548\1-POS-3MIN-1.M  
 Catalog No : HY-12245 Batch#20858  
 Method Info : Mobile Phase: A: water(0.01%TFA) B:ACN(0.01%TFA)  
 Gradient: 5% to 95%B within 1.3 min  
 Flow Rate :1.8ml/min  
 Column :SunFire C18, 4.6\*50mm,3.5um A-RP-314  
 Oven Temperature : 45□

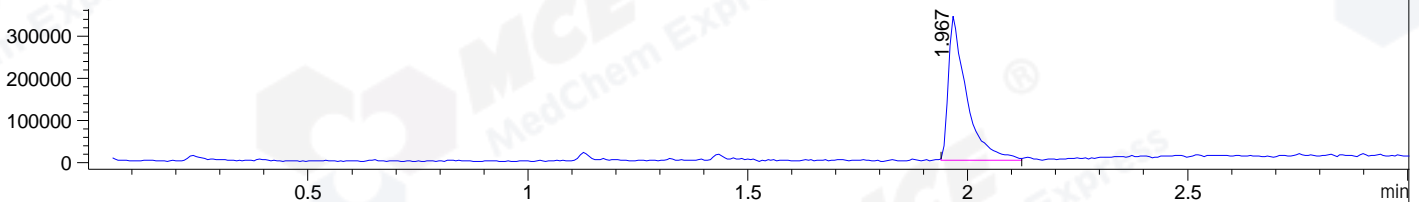
DAD1 B, Sig=214,4 Ref=off



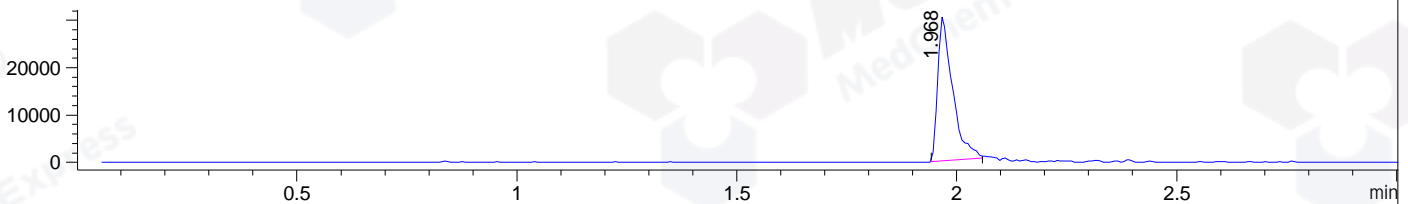
DAD1 C, Sig=254,4 Ref=off



MSD1 TIC, MS File ES-API, Pos, Scan, Frag: 70



Ion 288.7, MSD1 288.7, Target Mass 287.7 +H Positive, EIC=288.4:289.4



Integration Results for DAD1 B, Sig=214,4 Ref=off

RetTim	Width	Area	Height	Area%	MS (+)
1.42	0.01	32.69	32.36	1.34	340
1.77	0.01	0.55	0.85	0.02	ND
1.95	0.02	2406.50	1503.81	98.64	288

Integration Results for DAD1 C, Sig=254,4 Ref=off

RetTim	Width	Area	Height	Area%	MS (+)
1.23	0.01	0.23	0.30	0.02	ND
1.37	0.01	0.26	0.30	0.02	ND
1.42	0.01	15.23	15.60	1.29	340
1.47	0.01	0.16	0.30	0.01	340
1.58	0.01	0.24	0.31	0.02	ND
1.77	0.01	0.51	0.60	0.04	ND
1.95	0.02	1160.98	883.25	98.54	288
2.07	0.01	0.56	0.68	0.05	288

Integration Results for MSD1 TIC, MS File

1.97      0.04      983229.75      343123.44      100.00      288

RetTim	Width	Area	Height	Area%	MS (+)
--------	-------	------	--------	-------	--------

Ret. Time: 1.97

<<<< POSITIVE SPECTRA >>>>

ES-API Positive

