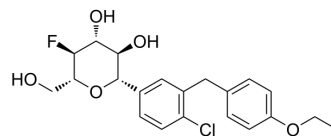


fluoro-Dapagliflozin

Cat. No.:	HY-122473
CAS No.:	1181681-43-5
Molecular Formula:	C ₂₁ H ₂₄ ClFO ₅
Molecular Weight:	410.86
Target:	SGLT
Pathway:	Membrane Transporter/Ion Channel
Storage:	Please store the product under the recommended conditions in the Certificate of Analysis.



BIOLOGICAL ACTIVITY

Description	fluoro-Dapagliflozin, a structural analog of Dapagliflozin, is a selective SGLT2 inhibitor with K _i values of 5.3 nM and 330 nM for SGLT2 and SGLT1, respectively. fluoro-Dapagliflozin blocks glucose transport and glucose-coupled currents ^[1] .	
IC ₅₀ & Target	hSGLT2 5.3 nM (K _i)	hSGLT1 330 nM (K _i)

REFERENCES

[1]. Charles S Hummel, et al. Structural selectivity of human SGLT inhibitors. Am J Physiol Cell Physiol. 2012 Jan 15;302(2):C373-82.

Caution: Product has not been fully validated for medical applications. For research use only.

Tel: 609-228-6898

Fax: 609-228-5909

E-mail: tech@MedChemExpress.com

Address: 1 Deer Park Dr, Suite Q, Monmouth Junction, NJ 08852, USA