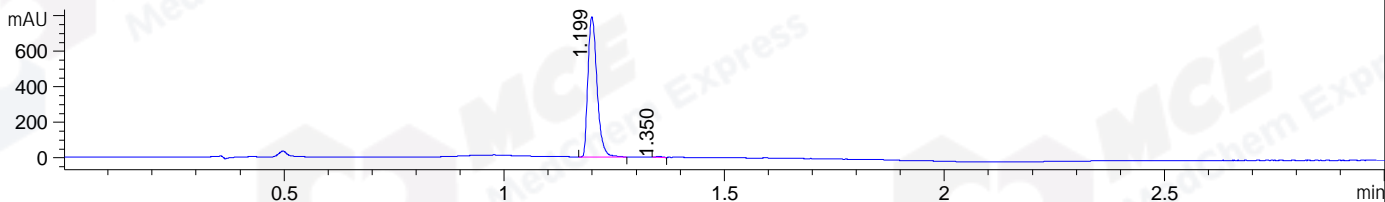
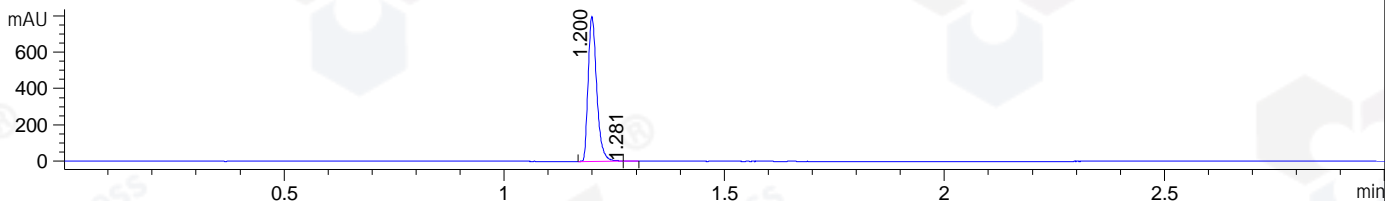


File ..1\DATA\2020\20200318\876\BIZ2020-317-CXL4.D Tgt Mass (CHM):
 Injection Date : 18 Mar 20 2:28 pm +0800 Seq. Line : 67
 Sample Name : BIZ2020-317-CXL4 Location : P1-D-04
 Acq. Operator : ZJ_1432 Inj : 1
 Spec. Reported : MS Integration Inj Volume : 1 ul
 Acq. Method : D:\Chem32\1\data\2020\20200318\876\1-POS-3MIN.M
 Analysis Method : D:\CHEM32\1\DATA\2020\20200318\876\1-POS-3MIN.M
 Catalog No : HY-122615 Batch# 61555
 Method Info : Mobile Phase: A: water(0.01%TFA) B:ACN(0.01%TFA)
 Gradient: 5% to 95%B within 1.3 min
 Flow Rate :1.8ml/min
 Column :SunFire C18, 4.6*50mm,3.5um A-RP-433
 Oven Temperature : 45□

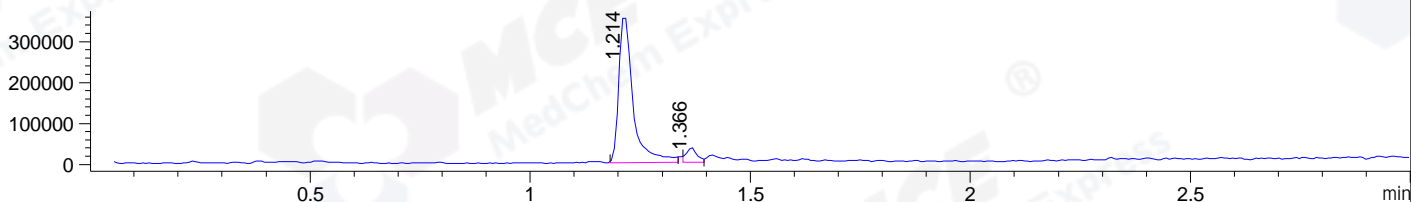
DAD1 B, Sig=214,4 Ref=off



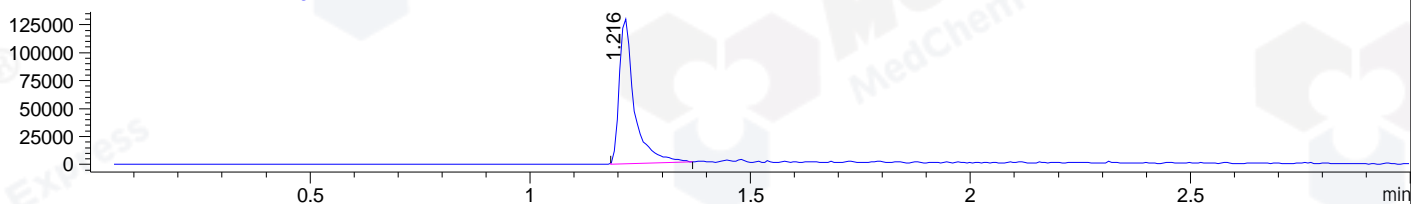
DAD1 C, Sig=254,4 Ref=off



MSD1 TIC, MS File ES-API, Pos, Scan, Frag: 70



Ion 501, MSD1 501, Target Mass 500 +H Positive, EIC=500.7:501.7



Integration Results for DAD1 B, Sig=214,4 Ref=off

RetTim	Width	Area	Height	Area%	MS (+)
1.20	0.02	1131.49	791.64	99.61	251
1.35	0.01	4.46	4.63	0.39	305

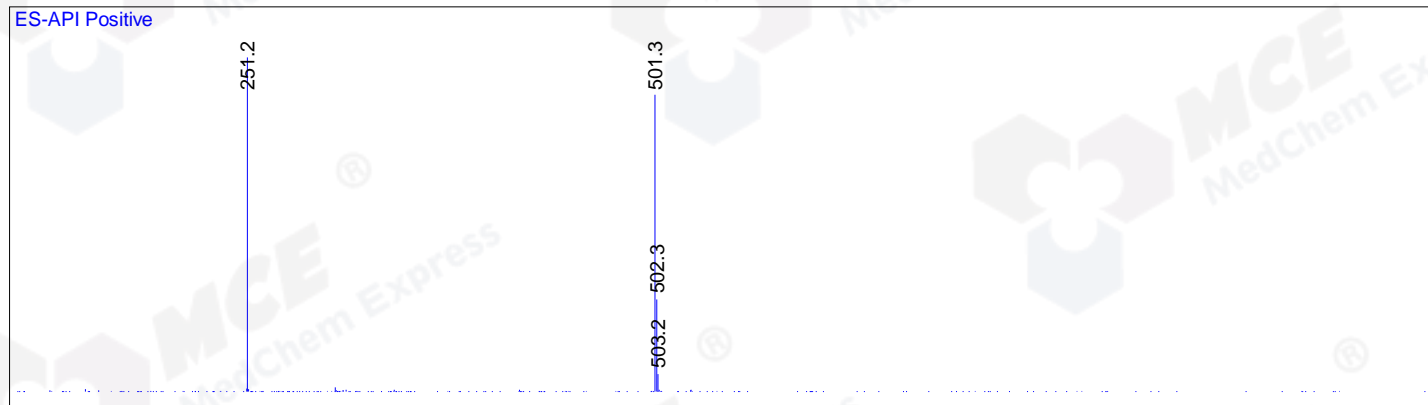
Integration Results for DAD1 C, Sig=254,4 Ref=off

RetTim	Width	Area	Height	Area%	MS (+)
1.20	0.02	1079.66	800.19	99.86	251
1.28	0.02	1.55	1.37	0.14	501

Integration Results for MSD1 TIC, MS File

RetTim	Width	Area	Height	Area%	MS (+)
1.21	0.03	811664.00	365053.94	92.87	251
1.37	0.02	62278.86	35592.27	7.13	305

Ret. Time: 1.21 <<<< POSITIVE SPECTRA >>>>



Ret. Time: 1.37

