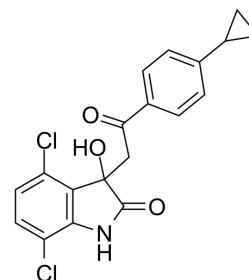


(+)-TK216

Cat. No.:	HY-122903B		
CAS No.:	1903783-77-6		
Molecular Formula:	C ₁₉ H ₁₅ Cl ₂ NO ₃		
Molecular Weight:	376.23		
Target:	DNA/RNA Synthesis		
Pathway:	Cell Cycle/DNA Damage		
Storage:	Powder	-20°C	3 years
		4°C	2 years
	In solvent	-80°C	6 months
		-20°C	1 month



Rotation (+)

SOLVENT & SOLUBILITY

In Vitro	DMSO : 100 mg/mL (265.79 mM; Need ultrasonic)				
		Solvent Concentration	Mass 1 mg	5 mg	10 mg
	Preparing Stock Solutions	1 mM	2.6579 mL	13.2897 mL	26.5795 mL
		5 mM	0.5316 mL	2.6579 mL	5.3159 mL
10 mM		0.2658 mL	1.3290 mL	2.6579 mL	
Please refer to the solubility information to select the appropriate solvent.					
In Vivo	<ol style="list-style-type: none"> Add each solvent one by one: 10% DMSO >> 40% PEG300 >> 5% Tween-80 >> 45% saline Solubility: ≥ 2.5 mg/mL (6.64 mM); Clear solution Add each solvent one by one: 10% DMSO >> 90% (20% SBE-β-CD in saline) Solubility: ≥ 2.5 mg/mL (6.64 mM); Clear solution Add each solvent one by one: 10% DMSO >> 90% corn oil Solubility: ≥ 2.5 mg/mL (6.64 mM); Clear solution 				

BIOLOGICAL ACTIVITY

Description	(+)-TK216 is an enantiomer of TK216 (HY-122903). TK216 is an orally active and potent E26 transformation specific (ETS) inhibitor ^{[1][2]} .
In Vitro	(+)-TK216 (compound 13; for 3 days) has an IC ₅₀ >5 μM in SKES cells (Ewing Sarcoma cell line) ^[1] . (+)-TK216 has T _{1/2} s of 103.4 mins, 3.6 mins, 26.6 mins and 8.4 mins for human, rat, mouse, dog liver microsomes ^[1] . MCE has not independently confirmed the accuracy of these methods. They are for reference only.

REFERENCES

- [1]. Spriano F, et al. The ETS Inhibitors YK-4-279 and TK-216 Are Novel Antilymphoma Agents. Clin Cancer Res. 2019 Aug 15;25(16):5167-5176.
- [2]. Jean-Michael Vernier, et al. Indolinone compounds and uses thereof. WO2016057698A1.
-

Caution: Product has not been fully validated for medical applications. For research use only.

Tel: 609-228-6898

Fax: 609-228-5909

E-mail: tech@MedChemExpress.com

Address: 1 Deer Park Dr, Suite Q, Monmouth Junction, NJ 08852, USA