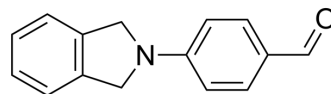


ALDH1A inhibitor 673A

Cat. No.:	HY-122912
CAS No.:	109437-62-9
Molecular Formula:	C ₁₅ H ₁₃ NO
Molecular Weight:	223.27
Target:	Aldehyde Dehydrogenase (ALDH); Necroptosis
Pathway:	Metabolic Enzyme/Protease; Apoptosis
Storage:	Please store the product under the recommended conditions in the Certificate of Analysis.



BIOLOGICAL ACTIVITY

Description

ALDH1A inhibitor 673A is an ALDH1A inhibitor. ALDH1A inhibitor 673A inhibits all three ALDH1A family members (IC₅₀: 246 nM, 230 nM, 348 nM for ALDH1A1, ALDH1A2, ALDH1A3 respectively). ALDH1A inhibitor 673A induces necroptotic cell death preferentially in CD133+ ovarian CSCs. ALDH1A inhibitor 673A also inhibits chemotherapy-resistant tumor growth^[1].

REFERENCES

[1]. Chefetz I, et al. A Pan-ALDH1A Inhibitor Induces Necroptosis in Ovarian Cancer Stem-like Cells. Cell Rep. 2019 Mar 12;26(11):3061-3075.e6.

Caution: Product has not been fully validated for medical applications. For research use only.

Tel: 609-228-6898

Fax: 609-228-5909

E-mail: tech@MedChemExpress.com

Address: 1 Deer Park Dr, Suite Q, Monmouth Junction, NJ 08852, USA