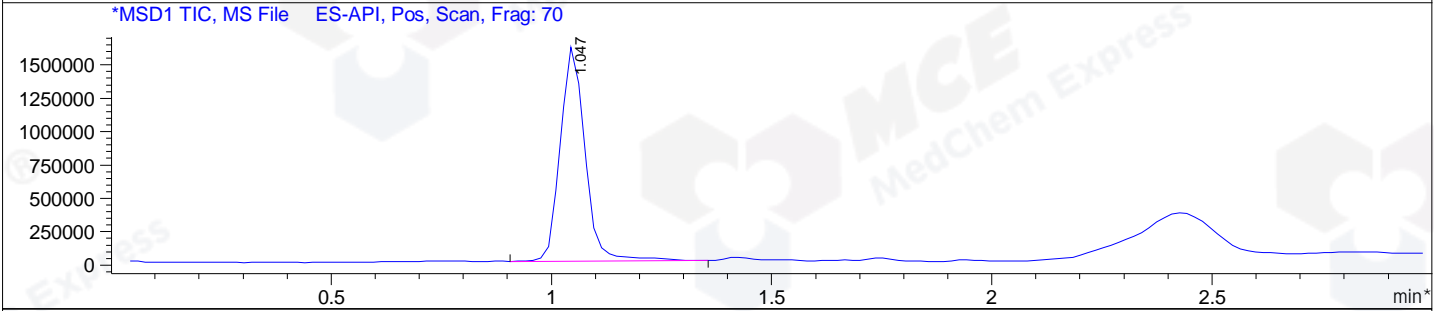
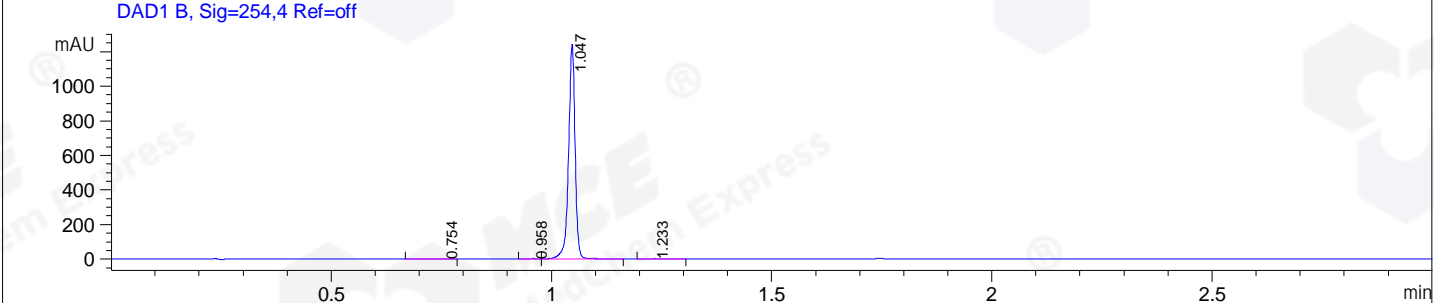
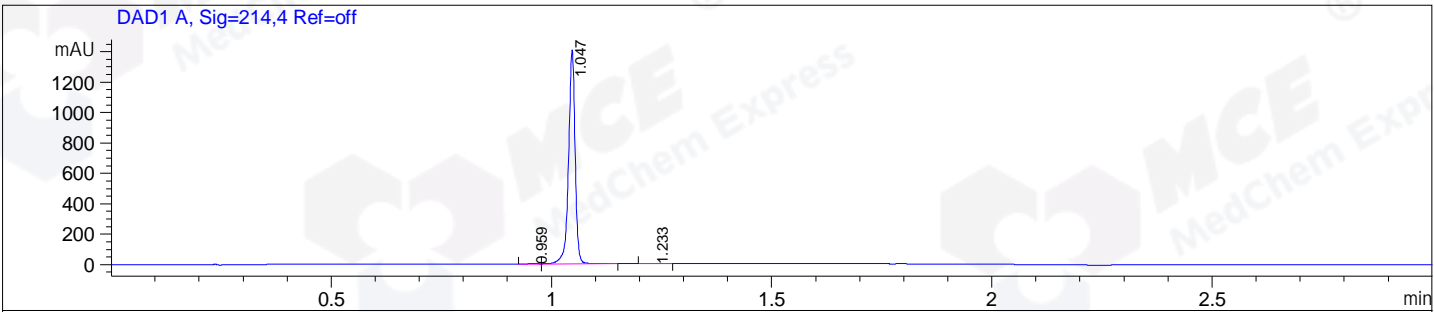


File E:\ChemStation\1\DATA\2025\2025-01\2025-01-08\CPK2025-0108-235739-UPLC-MS-10-052982.D
 Injection Date : 08-Jan-25, 15:54:42 Tgt Mass(EZX) :
 Sample Name : CPK2025-0108-235739 Location : P1-F-03
 Acq. Operator : LY_2278 Inj : 1
 Spec. Reported : MS Integration Inj Volume : 0.8 ul
 Acq. Method : E:\ChemStation\1\Methods\1-POS-UPLC3.0MIN(1.2)(150-1000).M
 Analysis Method : E:\CHEMSTATION\1\METHODS\1-POS-UPLC3.0MIN(1.2)(150-1000).M
 CAS NO. : 1218942-37-0 WalkUp method: '1-POS-3MIN' Project: CPK2025
 Method Info : Mobile Phase: A: water(0.01%TFA) B:ACN(0.01%TFA)
 Gradient: 5% to 95%B within 2.0 min
 Flow Rate :1.2ml/min
 Column :Shim-pack Scepter C18-120, 3.0*33mm,3um
 Oven Temperature : 45C



Integration Results for DAD1 A, Sig=214,4 Ref=off

RetTim	Width	Area	Height	Area%
0.96	0.01	1.57	1.67	0.11
1.05	0.02	1459.47	1403.21	99.75
1.23	0.02	2.04	1.70	0.14

Integration Results for DAD1 B, Sig=254,4 Ref=off

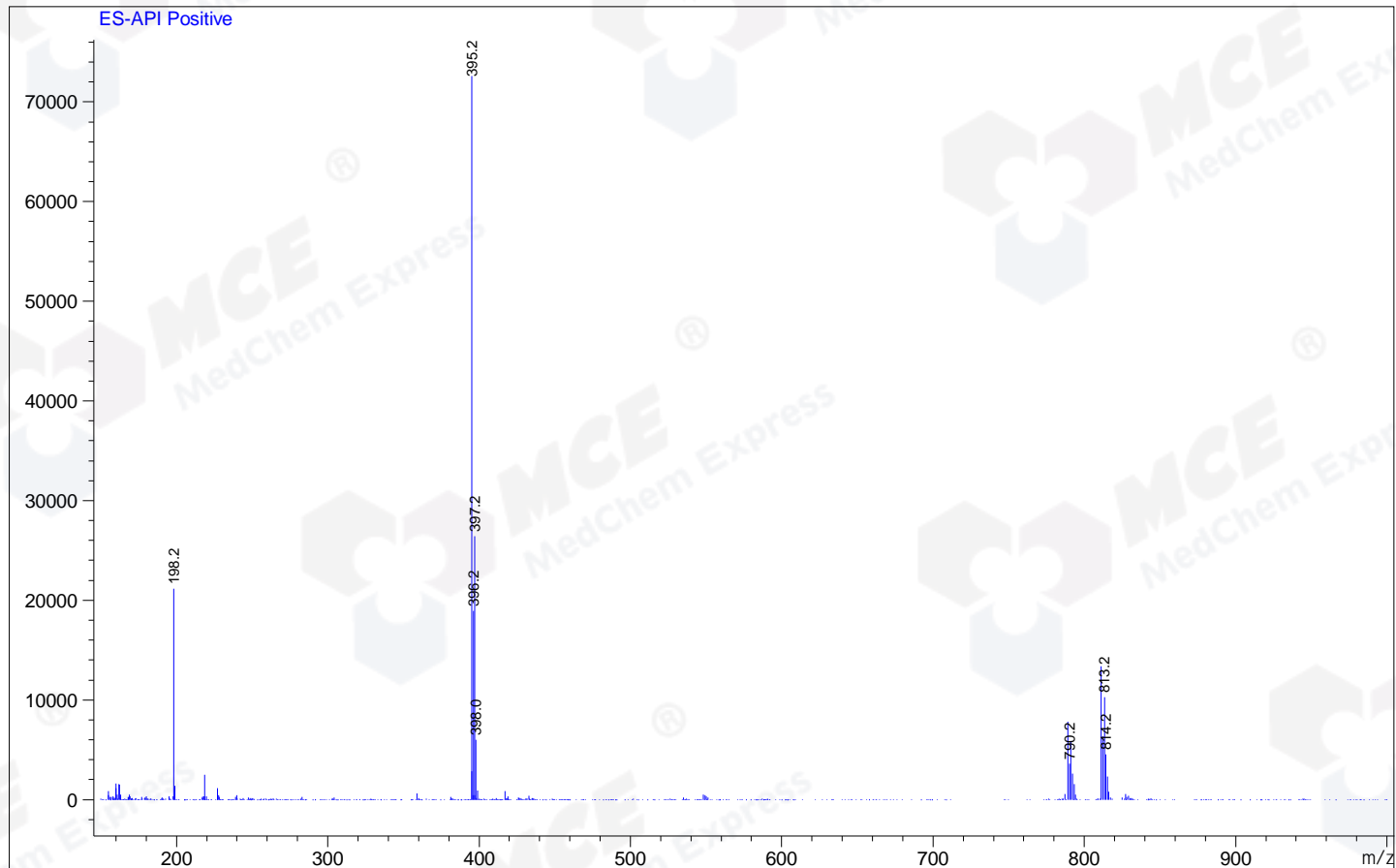
RetTim	Width	Area	Height	Area%
0.75	0.06	0.67	0.15	0.05
0.96	0.02	1.43	1.51	0.11
1.05	0.02	1285.90	1239.47	99.71
1.23	0.02	1.60	1.36	0.12

Integration Results for MSD1 TIC, MS File

RetTim	Width	Area	Height	Area%
1.05	0.06	6284732.00	1605889.50	100.00

Ret. Time: 1.05

<<<< POSITIVE SPECTRA >>>>



*** End of Report ***