

File ..018\20180710\20180710-1\CPK2018-709-18049.D Tgt Mass (CHM):

Injection Date : 10 Jul 18 12:59 pm +0800 Seq. Line : 52

Sample Name : CPK2018-709-18049 Location : P1-E-07

Acq. Operator : SYSTEM Inj : 1

Spec. Reported : MS Integration Inj Volume : 3 ul

Acq. Method : D:\LCMS03\Data\2018\20180710\20180710-1\1-POS-3MIN.M

Analysis Method : D:\LCMS03\Data\2018\20180710\20180710-1\1-POS-3MIN.M

Catalog No : HY-12302 Batch#18049

Method Info : Mobile Phase: A: water(0.01%TFA) B:ACN(0.01%TFA)

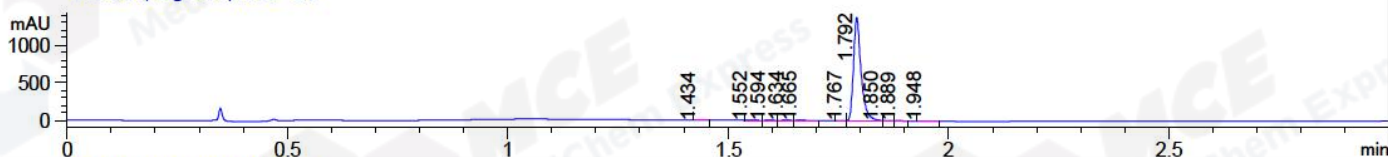
Gradient: 5% to 95%B within 1.3 min

Flow Rate :1.8ml/min

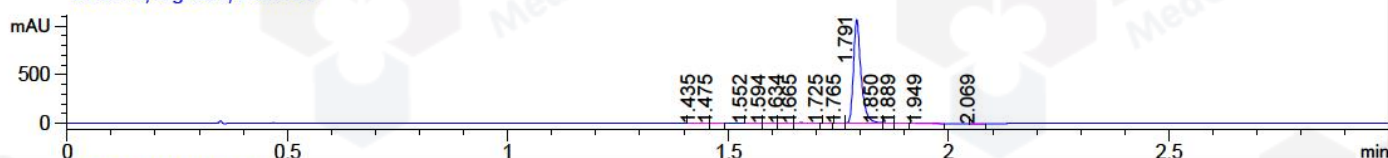
Column :SunFire C18, 4.6\*50mm,3.5um A-RP-186

Oven Temperature : 45C

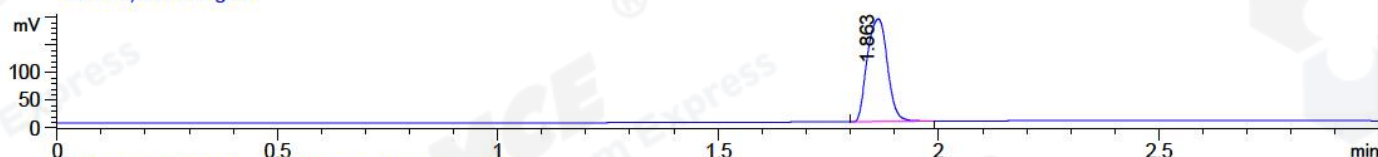
DAD1 A, Sig=214,4 Ref=off



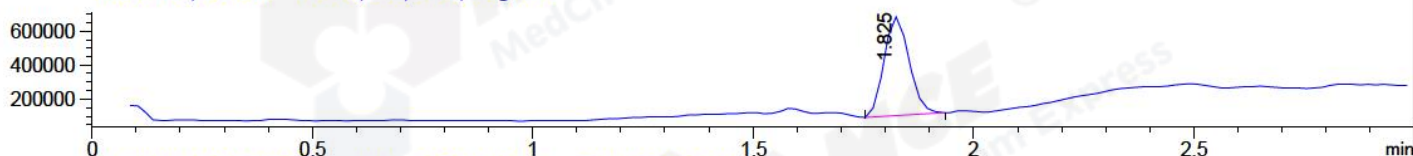
DAD1 B, Sig=254,4 Ref=off



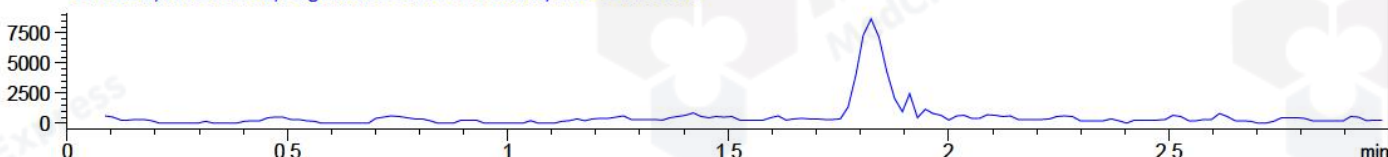
ELS1 A, ELSD Signal



MSD1 TIC, MS File ES-API, Pos, Scan, Frag: 70



Ion 328.2, MSD1 328.2, Target Mass 327.2 +H Positive, EIC=327.9:328.9



## Integration Results for DAD1 A, Sig=214,4 Ref=off

RetTim	Width	Area	Height	Area%	MS (+)
1.43	0.02	1.93	1.90	0.11	233
1.55	0.02	3.15	3.21	0.19	233
1.59	0.01	3.45	3.89	0.21	556
1.63	0.02	3.47	3.19	0.21	233
1.66	0.02	8.14	6.26	0.49	233
1.77	0.01	1.59	3.04	0.09	233
1.79	0.02	1644.92	1370.00	98.07	677
1.85	0.01	3.92	5.39	0.23	677
1.89	0.02	1.94	2.01	0.12	233
1.95	0.02	4.78	3.72	0.28	233

## Integration Results for DAD1 B, Sig=254,4 Ref=off

RetTim	Width	Area	Height	Area%	MS (+)
1.44	0.02	0.97	0.82	0.07	233
1.48	0.02	0.26	0.25	0.02	233
1.55	0.02	2.23	2.24	0.17	233
1.59	0.01	2.28	2.55	0.17	556

1.63	0.02	3.32	2.99	0.25	233
1.66	0.02	4.98	3.63	0.38	233
1.73	0.01	0.19	0.24	0.01	233
1.77	0.01	1.72	3.07	0.13	233
1.79	0.02	1282.25	1066.62	98.01	677
1.85	0.01	2.96	3.96	0.23	677
1.89	0.01	1.73	1.85	0.13	233
1.95	0.02	4.96	3.68	0.38	233
2.07	0.02	0.37	0.35	0.03	233

## Integration Results for ELS1 A, ELSD Signal

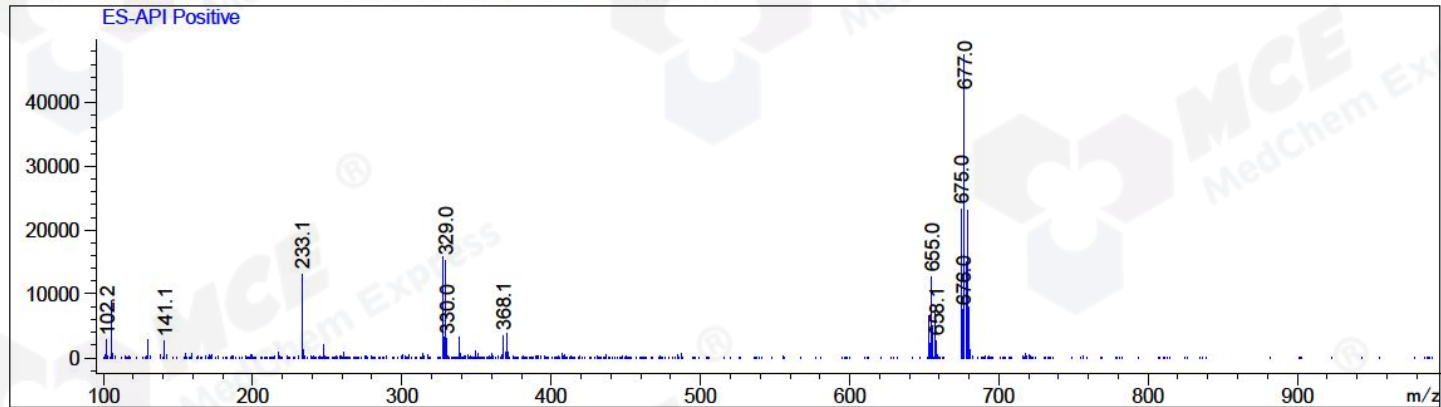
RetTim	Width	Area	Height	Area%	MS (+)
1.86	0.05	591.30	185.54	100.00	677

## Integration Results for MSD1 TIC, MS File

RetTim	Width	Area	Height	Area%	MS (+)
1.82	0.06	2291200.75	579717.88	100.00	677

Ret. Time: 1.82

<<<< POSITIVE SPECTRA >>>>



\*\*\* End of Report \*\*\*