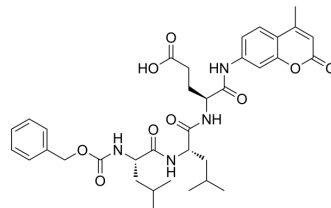


Z-Leu-Leu-Glu-AMC

Cat. No.:	HY-123053
CAS No.:	348086-66-8
Molecular Formula:	C ₃₅ H ₄₄ N ₄ O ₉
Molecular Weight:	664.75
Sequence:	{Z}-Leu-Leu-Glu-{AMC}
Sequence Shortening:	{Z}-LLE-{AMC}
Target:	Proteasome
Pathway:	Metabolic Enzyme/Protease
Storage:	Sealed storage, away from moisture
	Powder -80°C 2 years
	-20°C 1 year



* In solvent : -80°C, 6 months; -20°C, 1 month (sealed storage, away from moisture)

SOLVENT & SOLUBILITY

In Vitro

DMSO : 100 mg/mL (150.43 mM; Need ultrasonic)

Concentration	Solvent	Mass		
		1 mg	5 mg	10 mg
Preparing Stock Solutions	1 mM	1.5043 mL	7.5216 mL	15.0433 mL
	5 mM	0.3009 mL	1.5043 mL	3.0086 mL
	10 mM	0.1504 mL	0.7522 mL	1.5043 mL

Please refer to the solubility information to select the appropriate solvent.

BIOLOGICAL ACTIVITY

Description

Z-Leu-Leu-Glu-AMC is a substrate peptide, and can be used for determination of postacidic-like hydrolysing activity of 20S proteasome^[1]

REFERENCES

[1]. McNaught KS, et al. Proteasomal function is impaired in substantia nigra in Parkinson's disease. *Neurosci Lett.* 2001 Jan 19;297(3):191-4.

Caution: Product has not been fully validated for medical applications. For research use only.

Tel: 609-228-6898

Fax: 609-228-5909

E-mail: tech@MedChemExpress.com

Address: 1 Deer Park Dr, Suite Q, Monmouth Junction, NJ 08852, USA