

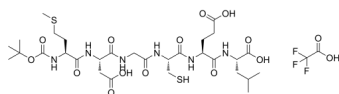
Box5 (TFA)

Cat. No.: HY-123071A
Batch No.: 286733
Molecular Formula: C₃₂H₅₁F₃N₆O₁₅S₂

ANALYTICAL DATA

Theoretical: C(-), H(-), N(-), Peptide Content(≥60.0%)
Result: C(42.07%), H(6.54%), N(9.63%), Peptide Content(87.90%)

Chemical Structure:



Caution: Product has not been fully validated for medical applications. For research use only.

Tel: 609-228-6898

Fax: 609-228-5909

E-mail: tech@MedChemExpress.com

Address: 1 Deer Park Dr, Suite Q, Monmouth Junction, NJ 08852, USA