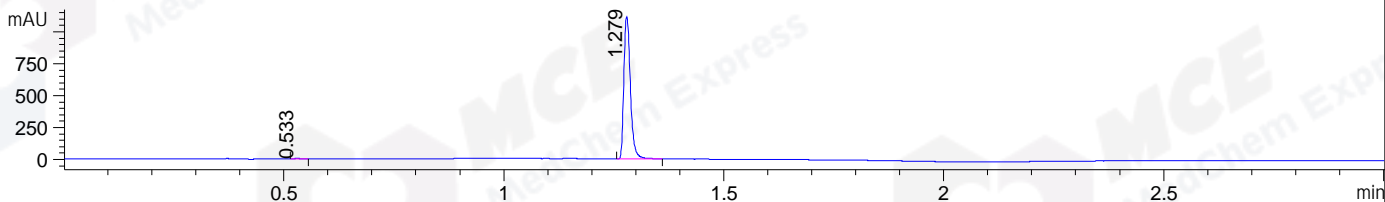
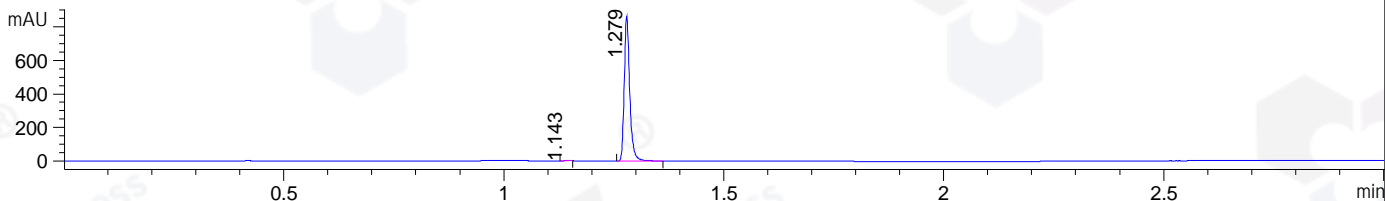


File ..1\DATA\2019\20190726\663\BIZ2019-725-CXL7.D Tgt Mass (CHM):
 Injection Date : 26 Jul 19 1:37 pm +0800 Seq. Line : 25
 Sample Name : BIZ2019-725-CXL7 Location : P1-A-09
 Acq. Operator : ZJ_1432 Inj : 1
 Spec. Reported : MS Integration Inj Volume : 1 ul
 Acq. Method : D:\Chem32\1\data\2019\20190726\663\1-POS-3MIN.M
 Analysis Method : D:\CHEM32\1\DATA\2019\20190726\663\1-POS-3MIN.M
 Catalog No : HY-123210 Batch# 43860
 Method Info : Mobile Phase: A: water(0.01%TFA) B:ACN(0.01%TFA)
 Gradient: 5% to 95%B within 1.3 min
 Flow Rate :1.8ml/min
 Column :SunFire C18, 4.6*50mm,3.5um A-RP-433
 Oven Temperature : 45

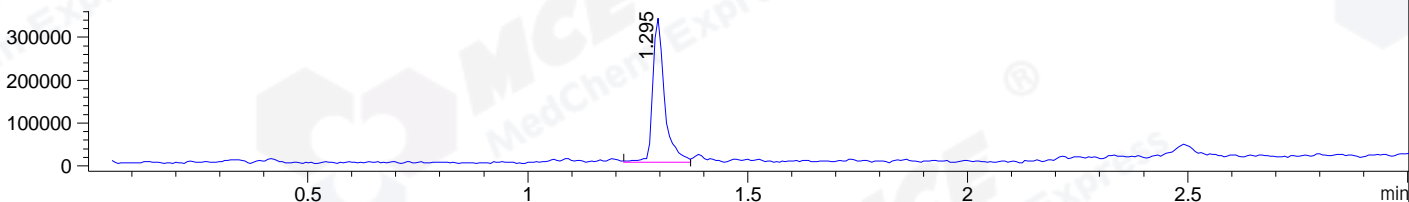
DAD1 B, Sig=214,4 Ref=off



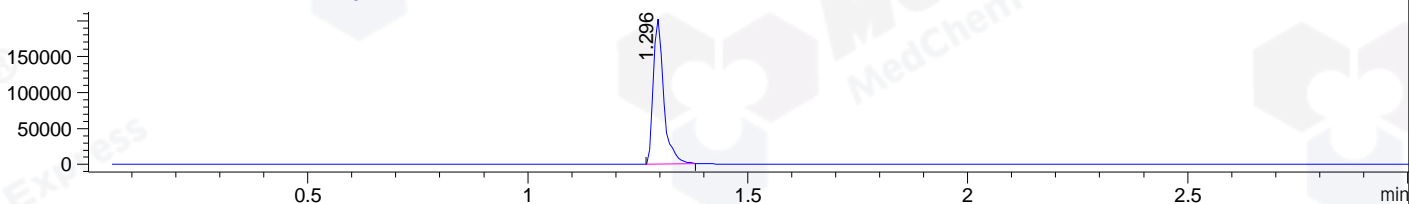
DAD1 C, Sig=254,4 Ref=off



MSD1 TIC, MS File ES-API, Pos, Scan, Frag: 70



Ion 505.22, MSD1 505.22, Target Mass 504.22 +H Positive, EIC=504.92:505.92



Integration Results for DAD1 B, Sig=214,4 Ref=off

RetTim	Width	Area	Height	Area%	MS (+)
0.53	0.02	3.19	2.71	0.27	ND
1.28	0.02	1157.17	1116.32	99.73	505

Integration Results for DAD1 C, Sig=254,4 Ref=off

RetTim	Width	Area	Height	Area%	MS (+)
1.14	0.02	0.45	0.42	0.06	ND
1.28	0.01	746.68	863.55	99.94	505

Integration Results for MSD1 TIC, MS File

RetTim	Width	Area	Height	Area%	MS (+)
1.30	0.03	623904.25	336618.16	100.00	505

Ret. Time: 1.30

<<<< POSITIVE SPECTRA >>>>

ES-API Positive

