

File ..\DATA\2020\20200707\1031\BIZ2020-706-SCH1.D Tgt Mass (CHM):

Injection Date : 7 Jul 20 10:17 am +0800 Seq. Line : 11

Sample Name : BIZ2020-706-SCH1 Location : P1-D-02

Acq. Operator : ZJ_1432 Inj : 1

Spec. Reported : MS Integration Inj Volume : 1 ul

Acq. Method : D:\Chem32\1\data\2020\20200707\1031\1-POS-3MIN.M

Analysis Method : D:\CHEM32\1\DATA\2020\20200707\1031\1-POS-3MIN.M

Catalog No : HY-12323

Method Info : Mobile Phase: A: water(0.01%TFA) B:ACN(0.01%TFA)

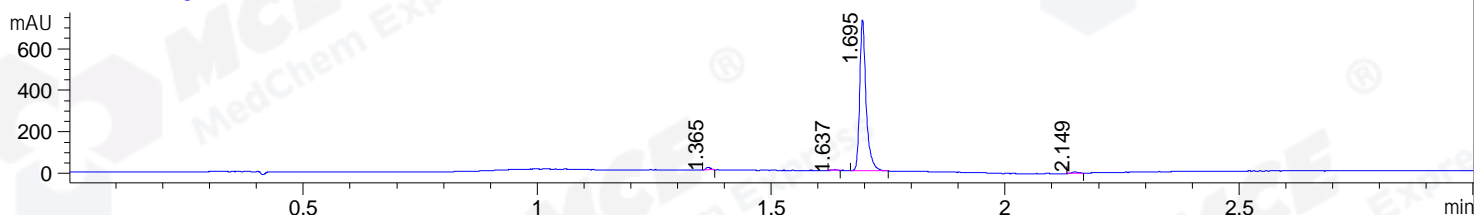
Gradient: 5% to 95%B within 1.3 min

Flow Rate :1.8ml/min

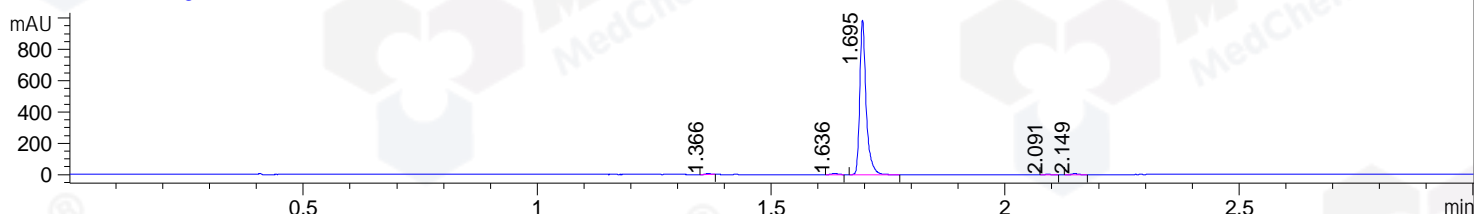
Column :SunFire C18, 4.6*50mm,3.5um A-RP-607

Oven Temperature : 45

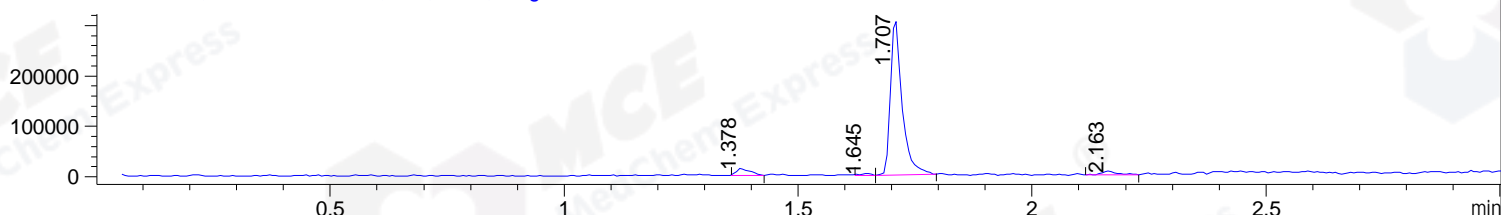
DAD1 B, Sig=214,4 Ref=off



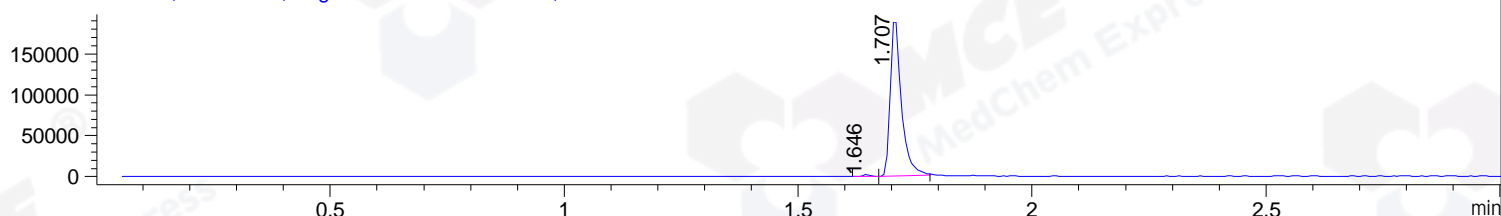
DAD1 C, Sig=254,4 Ref=off



MSD1 TIC, MS File ES-API, Pos, Scan, Frag: 70



Ion 235, MSD1 235, Target Mass 234 +H Positive, EIC=234.7:235.7



Integration Results for DAD1 B, Sig=214,4 Ref=off

RetTim	Width	Area	Height	Area%	MS (+)
1.37	0.01	7.11	11.22	1.00	307
1.64	0.01	1.75	2.99	0.25	235
1.70	0.02	697.28	728.72	98.07	235
2.15	0.01	4.84	6.02	0.68	301

Integration Results for DAD1 C, Sig=254,4 Ref=off

RetTim	Width	Area	Height	Area%	MS (+)
1.37	0.01	4.40	6.17	0.46	307
1.64	0.01	5.21	6.75	0.54	235
1.70	0.02	939.01	988.37	98.02	235
2.09	0.01	3.44	4.48	0.36	ND
2.15	0.01	5.88	6.86	0.61	301

Integration Results for MSD1 TIC, MS File

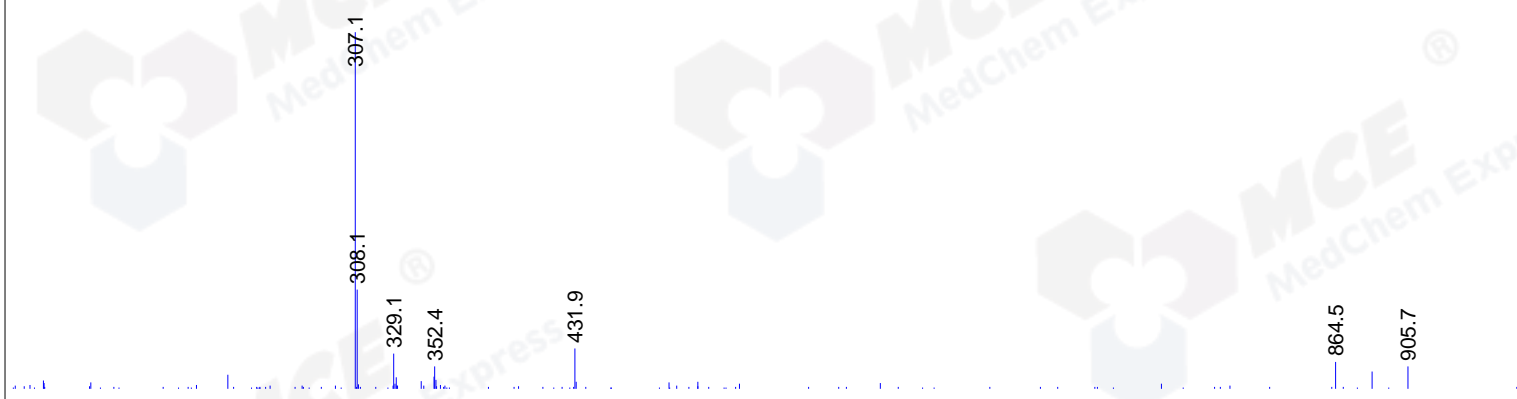
RetTim	Width	Area	Height	Area%	MS (+)
--------	-------	------	--------	-------	--------

1.38	0.03	28101.15	14289.28	4.77	307
1.65	0.03	5624.74	3899.88	0.95	235
1.71	0.02	539007.19	311661.47	91.46	235
2.16	0.03	16606.48	8121.62	2.82	ND

Ret. Time: 1.38

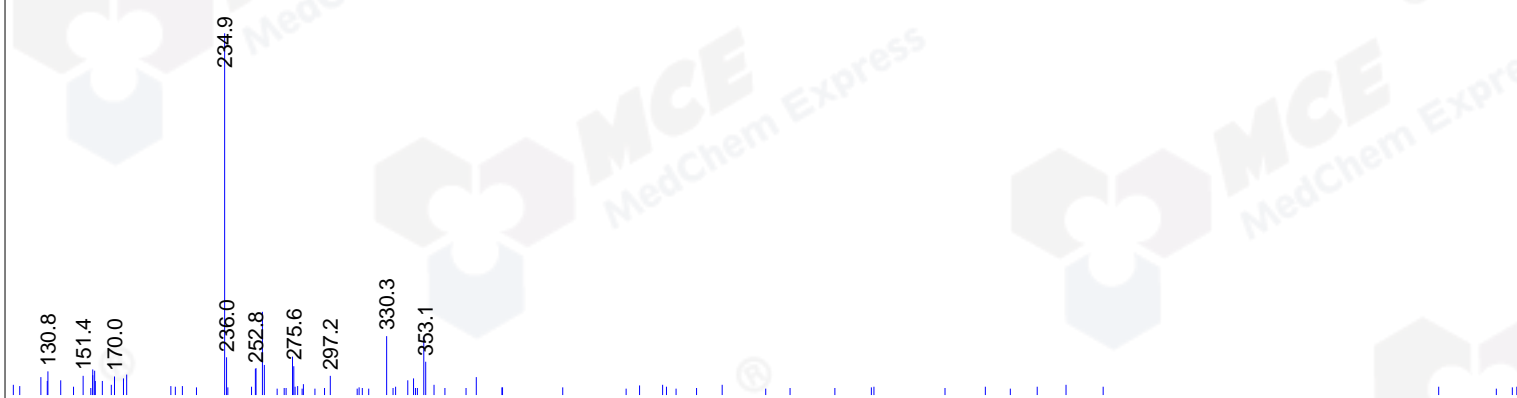
<<<< POSITIVE SPECTRA >>>>

ES-API Positive



Ret. Time: 1.65

ES-API Positive



Ret. Time: 1.71

ES-API Positive

