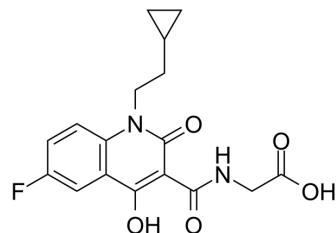


## GSK360A

<b>Cat. No.:</b>	HY-123422
<b>CAS No.:</b>	931399-19-8
<b>Molecular Formula:</b>	C <sub>17</sub> H <sub>17</sub> FN <sub>2</sub> O <sub>5</sub>
<b>Molecular Weight:</b>	348.33
<b>Target:</b>	HIF/HIF Prolyl-Hydroxylase
<b>Pathway:</b>	Metabolic Enzyme/Protease
<b>Storage:</b>	-20°C, sealed storage, away from moisture * In solvent : -80°C, 6 months; -20°C, 1 month (sealed storage, away from moisture)



### SOLVENT & SOLUBILITY

#### In Vitro

DMSO : 2 mg/mL (5.74 mM; Need ultrasonic and warming)

Concentration	Solvent	Mass		
		1 mg	5 mg	10 mg
Preparing Stock Solutions	1 mM	2.8708 mL	14.3542 mL	28.7084 mL
	5 mM	0.5742 mL	2.8708 mL	5.7417 mL
	10 mM	---	---	---

Please refer to the solubility information to select the appropriate solvent.

### BIOLOGICAL ACTIVITY

#### Description

GSK360A is a potent and orally active HIF-PHD inhibitor with IC<sub>50</sub> values of 10, 100, and 126 nM for PHD1, PHD2, and PHD3, respectively. GSK360A activates the HIF-1 alpha pathway and protect the failing heart after myocardial infarction (MI) <sup>[1]</sup>.

#### In Vivo

GSK360A (30 mg/kg i.g.) improves long-term ventricular function, remodeling, and vascularity in a model of established ventricular dysfunction<sup>[1]</sup>.

MCE has not independently confirmed the accuracy of these methods. They are for reference only.

Animal Model:	male Lewis rats with ventricular dysfunction model <sup>[1]</sup>
Dosage:	30 mg/kg
Administration:	oral gavage
Result:	Increased circulating levels of erythropoietin and hemoglobin and hemoxygenase-1 expression in the heart and skeletal muscle of male rats.

---

## REFERENCES

---

[1]. Bao W, et, al. Chronic inhibition of hypoxia-inducible factor prolyl 4-hydroxylase improves ventricular performance, remodeling, and vascularity after myocardial infarction in the rat. J Cardiovasc Pharmacol. 2010 Aug;56(2):147-55.

---

**Caution: Product has not been fully validated for medical applications. For research use only.**

Tel: 609-228-6898

Fax: 609-228-5909

E-mail: [tech@MedChemExpress.com](mailto:tech@MedChemExpress.com)

Address: 1 Deer Park Dr, Suite Q, Monmouth Junction, NJ 08852, USA