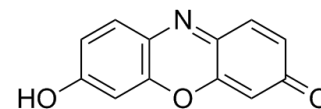


## Resorufin

Cat. No.:	HY-123533
CAS No.:	635-78-9
Molecular Formula:	C <sub>12</sub> H <sub>7</sub> NO <sub>3</sub>
Molecular Weight:	213.19
Target:	Others
Pathway:	Others
Storage:	Please store the product under the recommended conditions in the COA.



### BIOLOGICAL ACTIVITY

#### Description

Resorufin (NSC 12097) is a highly fluorescent pink dye.

### REFERENCES

[1]. Odyniec ML, et al. 'AND'-based fluorescence scaffold for the detection of ROS/RNS and a second analyte. Chem Commun (Camb). 2018 Jul 26;54(61):8466-8469.

**Caution: Product has not been fully validated for medical applications. For research use only.**

Tel: 609-228-6898

Fax: 609-228-5909

E-mail: tech@MedChemExpress.com

Address: 1 Deer Park Dr, Suite Q, Monmouth Junction, NJ 08852, USA