

File ..\DATA\2019\20190625\612\BIZ2019-624-WYQ14.D Tgt Mass (CHM):

Injection Date : 25 Jun 19 11:38 am +0800 Seq. Line : 35

Sample Name : BIZ2019-624-WYQ14 Location : PL-C-06

Acq. Operator : ZJ_1432 Inj : 1

Spec. Reported : MS Integration Inj Volume : 1 ul

Acq. Method : D:\Chem32\1\data\2019\20190625\612\1-POS-3MIN.M

Analysis Method : D:\CHEM32\1\DATA\2019\20190625\612\1-POS-3MIN.M

Catalog No : HY-123534 Batch#42644

Method Info : Mobile Phase: A: water(0.01%TFA) B:ACN(0.01%TFA)

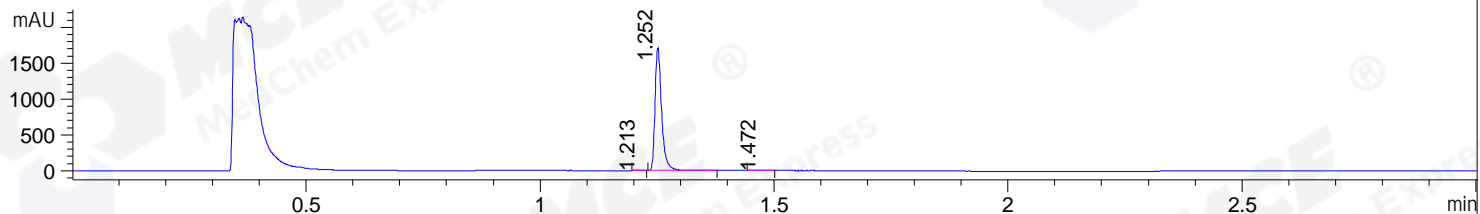
Gradient: 5% to 95%B within 1.3 min

Flow Rate :1.8ml/min

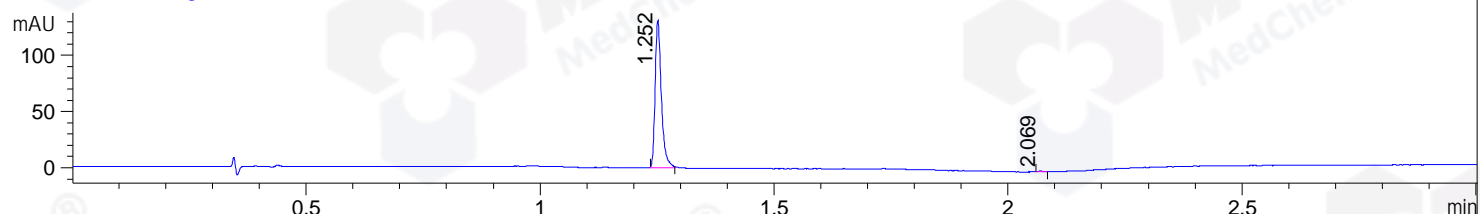
Column :SunFire C18, 4.6*50mm,3.5um A-RP-433

Oven Temperature : 45

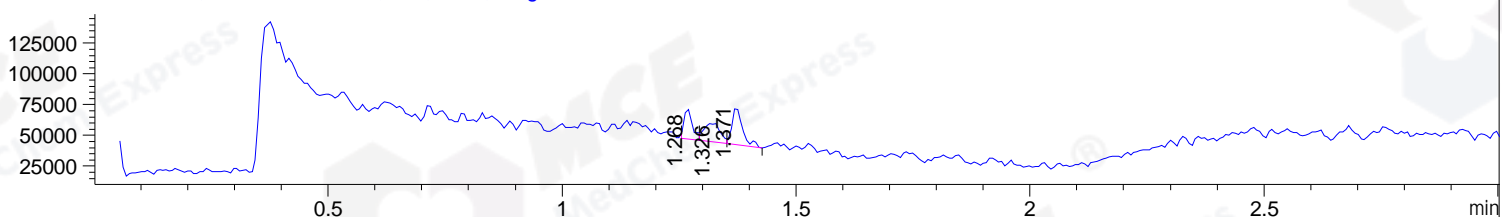
DAD1 B, Sig=214,4 Ref=off



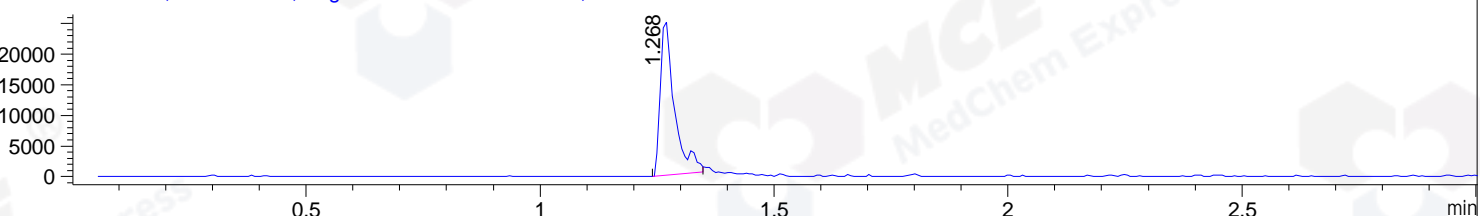
DAD1 C, Sig=254,4 Ref=off



MSD1 TIC, MS File ES-API, Pos, Scan, Frag: 70



Ion 625.3, MSD1 625.3, Target Mass 624.3 +H Positive, EIC=625:626



Integration Results for DAD1 B, Sig=214,4 Ref=off

RetTim	Width	Area	Height	Area%	MS (+)
1.21	0.01	1.77	2.12	0.11	157
1.25	0.02	1661.10	1709.31	99.74	157
1.47	0.02	2.59	1.85	0.16	157

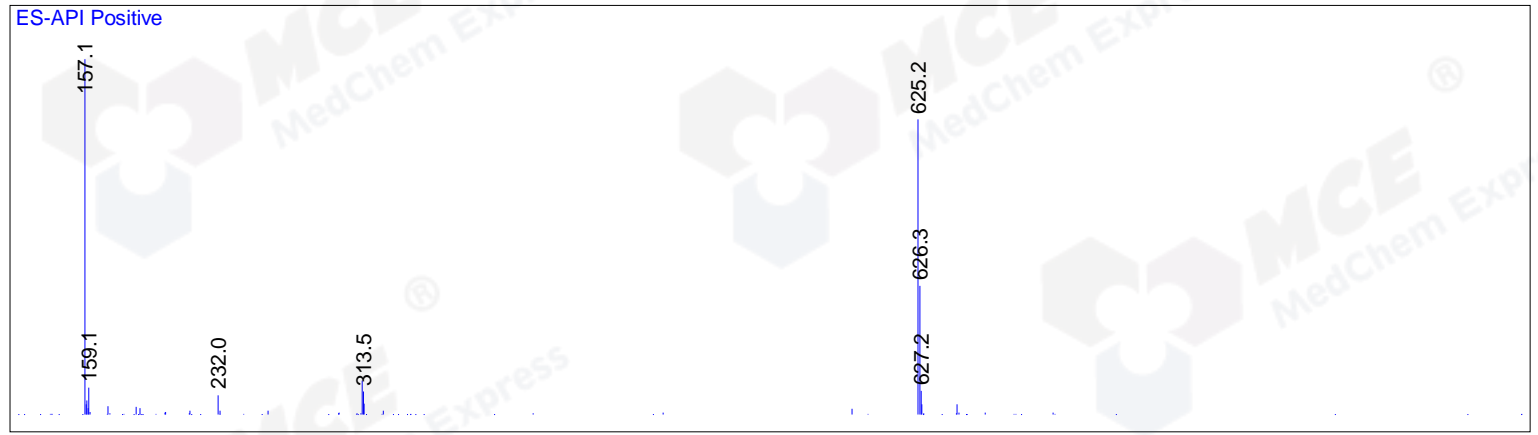
Integration Results for DAD1 C, Sig=254,4 Ref=off

RetTim	Width	Area	Height	Area%	MS (+)
1.25	0.01	121.49	131.31	99.64	157
2.07	0.01	0.44	0.57	0.36	157

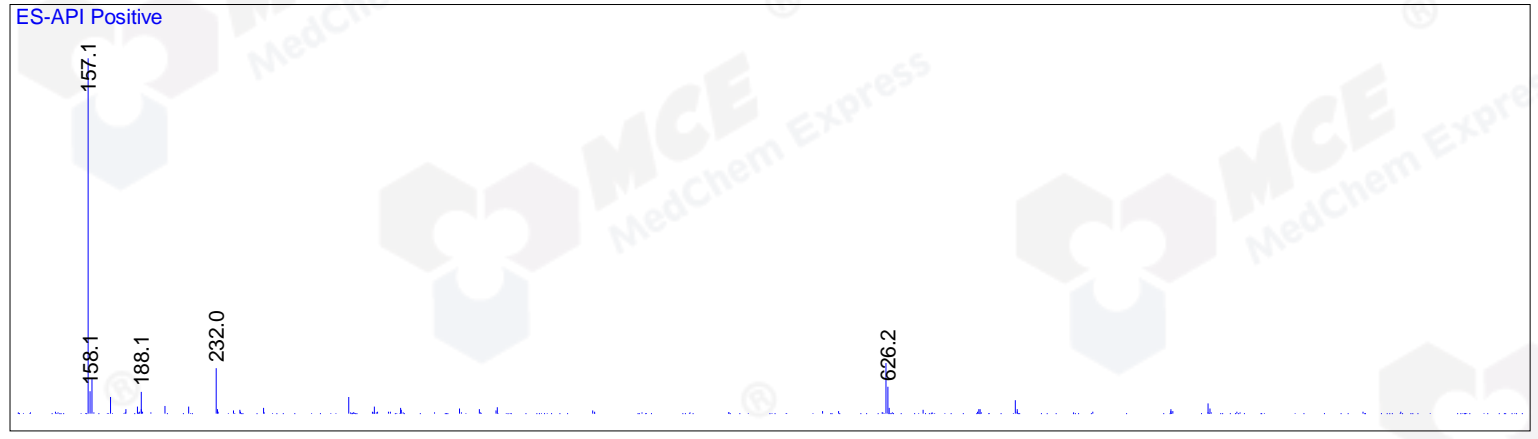
Integration Results for MSD1 TIC, MS File

RetTim	Width	Area	Height	Area%	MS (+)
1.27	0.02	30046.23	24551.38	26.08	157
1.33	0.03	36669.88	15797.60	31.83	157
1.37	0.03	48472.41	31299.74	42.08	157

Ret. Time: 1.27 <<<< POSITIVE SPECTRA >>>>



Ret. Time: 1.33



Ret. Time: 1.37

