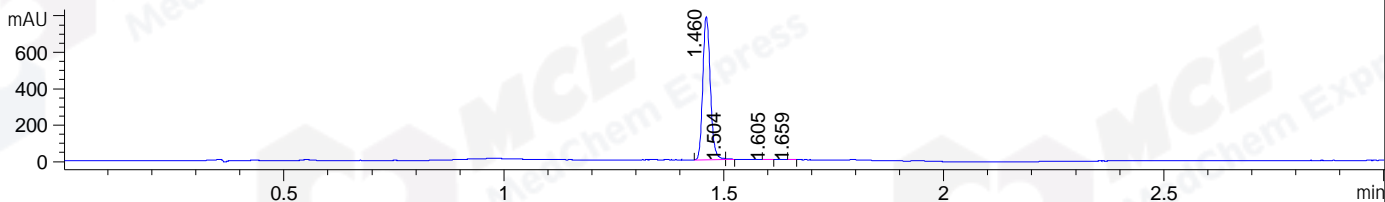
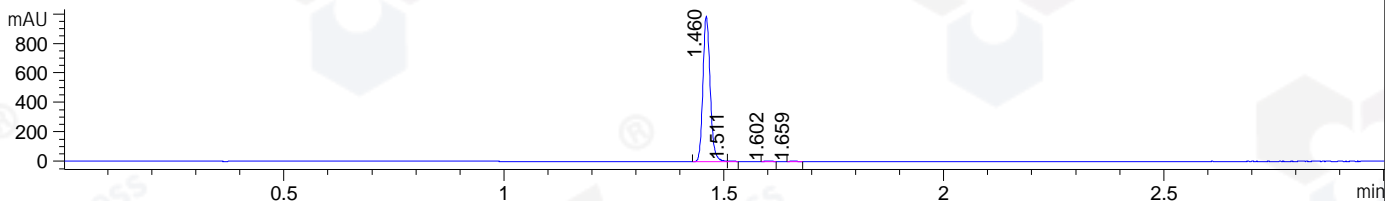


File ..ATA\2020\20200306\861 1\CPK2020-306-25549.D Tgt Mass (CHM):
 Injection Date : 6 Mar 20 6:48 pm +0800 Seq. Line : 110
 Sample Name : CPK2020-306-25549 Location : P1-C-01
 Acq. Operator : LQ_1052 Inj : 1
 Spec. Reported : MS Integration Inj Volume : 1 ul
 Acq. Method : D:\Chem32\1\data\2020\20200306\861 1\1-POS-3MIN.M
 Analysis Method : D:\CHEM32\1\DATA\2020\20200306\861 1\1-POS-3MIN.M
 Catalog No : HY-12353A Batch#25549
 Method Info : Mobile Phase: A: water(0.01%TFA) B:ACN(0.01%TFA)
 Gradient: 5% to 95%B within 1.3 min
 Flow Rate :1.8ml/min
 Column :SunFire C18, 4.6*50mm,3.5um A-RP-433
 Oven Temperature : 45□

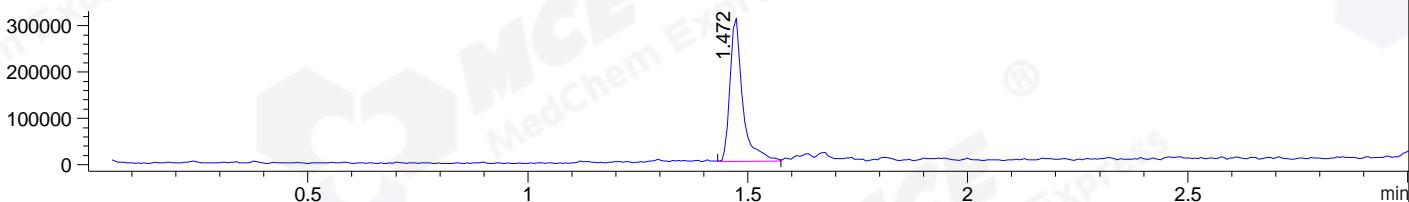
DAD1 B, Sig=214,4 Ref=off



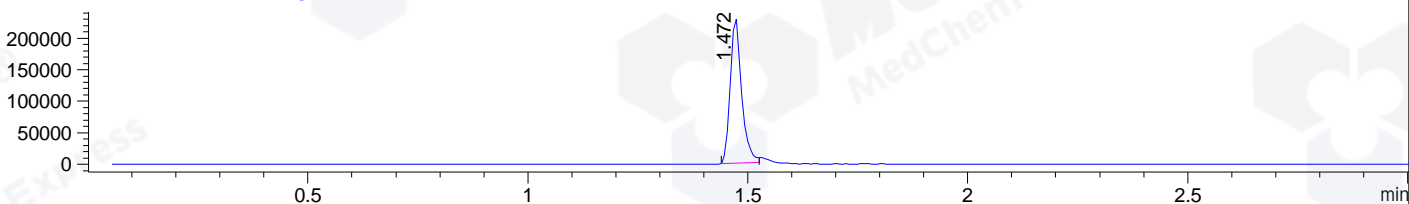
DAD1 C, Sig=254,4 Ref=off



MSD1 TIC, MS File ES-API, Pos, Scan, Frag: 70



Ion 400, MSD1 400, Target Mass 399 +H Positive, EIC=399.7:400.7



Integration Results for DAD1 B, Sig=214,4 Ref=off

RetTim	Width	Area	Height	Area%	MS (+)
1.46	0.02	931.48	786.90	99.45	400
1.50	0.01	3.13	4.60	0.33	400
1.60	0.01	1.06	1.52	0.11	414
1.66	0.01	0.95	1.56	0.10	428

Integration Results for DAD1 C, Sig=254,4 Ref=off

RetTim	Width	Area	Height	Area%	MS (+)
1.46	0.02	1123.27	987.48	99.27	400
1.51	0.01	3.61	4.46	0.32	400
1.60	0.02	2.05	2.08	0.18	414
1.66	0.02	2.61	2.55	0.23	428

Integration Results for MSD1 TIC, MS File

RetTim	Width	Area	Height	Area%	MS (+)
1.47	0.03	622693.81	312288.81	100.00	400

Ret. Time: 1.47

<<<< POSITIVE SPECTRA >>>>

ES-API Positive

