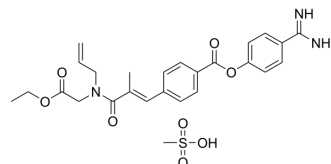


## ONO-3403

<b>Cat. No.:</b>	HY-123542
<b>CAS No.:</b>	181586-07-2
<b>Molecular Formula:</b>	C <sub>26</sub> H <sub>31</sub> N <sub>3</sub> O <sub>8</sub> S
<b>Molecular Weight:</b>	545.6
<b>Target:</b>	Ser/Thr Protease; Apoptosis
<b>Pathway:</b>	Metabolic Enzyme/Protease; Apoptosis
<b>Storage:</b>	Please store the product under the recommended conditions in the Certificate of Analysis.



## BIOLOGICAL ACTIVITY

<b>Description</b>	ONO-3403 is an orally active serine protease inhibitor. ONO-3403 inhibits the production of TNF- $\alpha$ and nitric oxide induced by LPS. ONO-3403 inhibits the cell growth and induces the apoptosis, and has an antitumor effect on malignant tumors <sup>[1][2][3][4]</sup> .
--------------------	---

## REFERENCES

- [1]. Tumurkhuu G, et al. ONO 3403, a synthetic serine protease inhibitor, inhibits lipopolysaccharide-induced tumor necrosis factor- $\alpha$  and nitric oxide production and protects mice from lethal endotoxic shock. *Innate Immun.* 2011;17(1):97-105.
- [2]. Hiwasa T, et al. Potent growth-suppressive activity of a serine protease inhibitor, ONO-3403, toward malignant human neuroblastoma cell lines. *Cancer Lett.* 1998;126(2):221-225.
- [3]. Ohkoshi M, et al. Growth inhibition of mouse autochthonous skin cancer by oral administration of new serine protease inhibitor ONO-3403. *Anticancer Res.* 2002;22(2A):821-823.

**Caution: Product has not been fully validated for medical applications. For research use only.**

Tel: 609-228-6898

Fax: 609-228-5909

E-mail: tech@MedChemExpress.com

Address: 1 Deer Park Dr, Suite Q, Monmouth Junction, NJ 08852, USA