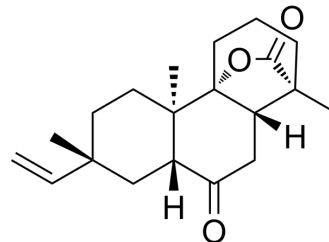


Rosenonolactone

Cat. No.:	HY-123550
CAS No.:	508-71-4
Molecular Formula:	C ₂₀ H ₂₈ O ₃
Molecular Weight:	316.43
Target:	Thrombin; CETP
Pathway:	Metabolic Enzyme/Protease
Storage:	Please store the product under the recommended conditions in the Certificate of Analysis.



BIOLOGICAL ACTIVITY

Description	Rosenonolactone shows inhibitory activity against prolyl endopeptidase and thrombin and cholesterol ester transfer protein ^{[1][2][3]} .
--------------------	---

REFERENCES

- [1]. Anis I, et al. Enzyme inhibitory constituents from *Duranta repens*. Chem Pharm Bull (Tokyo). 2002;50(4):515-518
- [2]. Anis I, Ahmed S, Malik A, Yasin A, Choudary MI. Enzyme inhibitory constituents from *Duranta repens*. Chem Pharm Bull (Tokyo). 2002;50(4):515-518.
- [3]. Wang Y, Zhang L, Wang F, Li ZH, Dong ZJ, Liu JK. New Diterpenes from Cultures of the Fungus *Engleromyces goetzii* and Their CETP Inhibitory Activity [published online ahead of print, 2015 Apr 8]. Nat Prod Bioprospect. 2015;5(2):69-75.

Caution: Product has not been fully validated for medical applications. For research use only.

Tel: 609-228-6898

Fax: 609-228-5909

E-mail: tech@MedChemExpress.com

Address: 1 Deer Park Dr, Suite Q, Monmouth Junction, NJ 08852, USA