

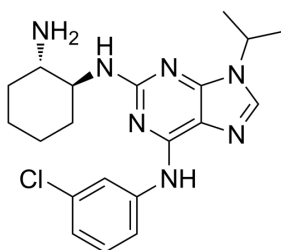
SRI-29329

Cat. No.: HY-123600
CAS No.: 2086809-58-5
Batch No.: 92058
Chemical Name: 9H-Purine-2,6-diamine, N2-[(1S,2S)-2-aminocyclohexyl]-N6-(3-chlorophenyl)-9-(1-methylethyl)-

PHYSICAL AND CHEMICAL PROPERTIES

Molecular Formula: C₂₀H₂₆ClN₇
Molecular Weight: 399.92
Storage: Powder -20°C 3 years
In solvent -80°C 6 months
-20°C 1 month

Chemical Structure:



ANALYTICAL DATA

Appearance: White to off-white (Solid)
LCMS: Consistent with structure
Purity (LCMS): 99.73%
Conclusion: The product has been tested and complies with the given specifications.

Caution: Product has not been fully validated for medical applications. For research use only.

Tel: 609-228-6898

Fax: 609-228-5909

E-mail: tech@MedChemExpress.com

Address: 1 Deer Park Dr, Suite Q, Monmouth Junction, NJ 08852, USA