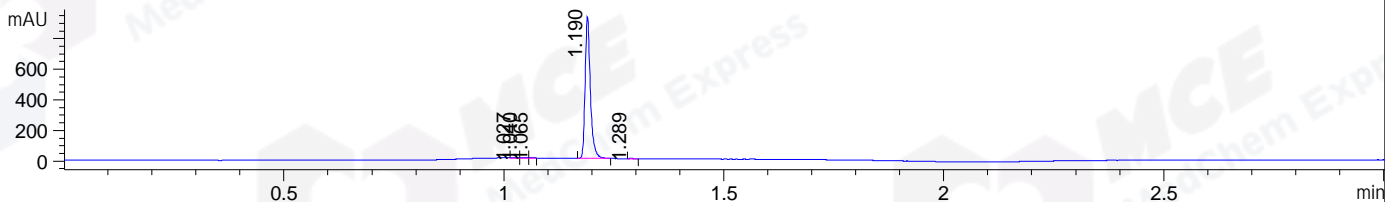
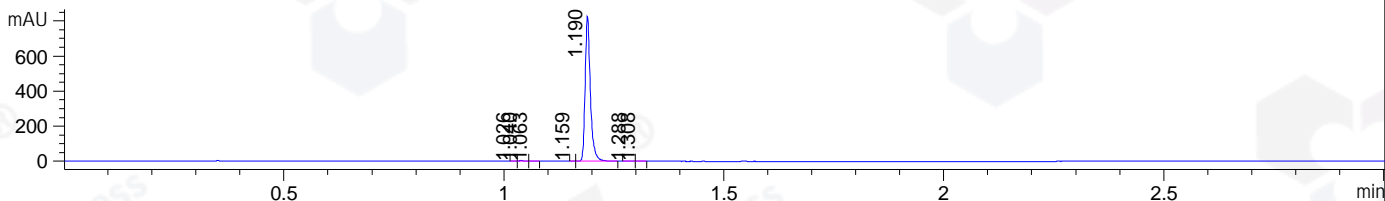


File ..\DATA\2020\20200628\1018\BIZ2020-624-WMX7.D Tgt Mass (CHM):
 Injection Date : 28 Jun 20 12:26 pm +0800 Seq. Line : 43
 Sample Name : BIZ2020-624-WMX7 Location : P1-C-03
 Acq. Operator : ZJ_1432 Inj : 1
 Spec. Reported : MS Integration Inj Volume : 1 ul
 Acq. Method : D:\Chem32\1\data\2020\20200628\1018\1-POS-3MIN.M
 Analysis Method : D:\CHEM32\1\DATA\2020\20200628\1018\1-POS-3MIN.M
 Catalog No : HY-123604
 Method Info : Mobile Phase: A: water(0.01%TFA) B:ACN(0.01%TFA)
 Gradient: 5% to 95%B within 1.3 min
 Flow Rate :1.8ml/min
 Column :SunFire C18, 4.6*50mm,3.5um A-RP-607
 Oven Temperature : 45

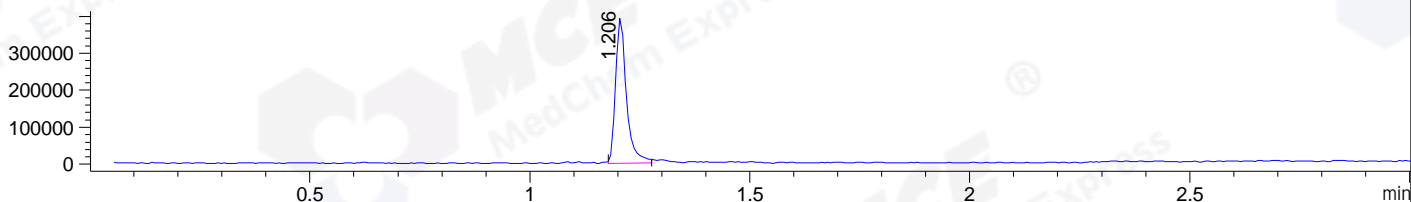
DAD1 B, Sig=214,4 Ref=off



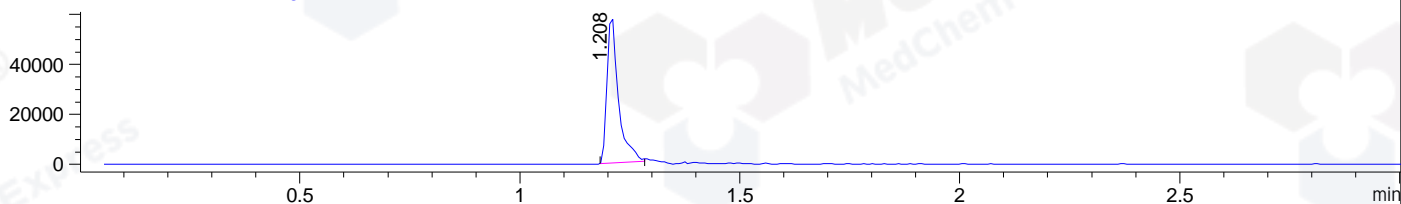
DAD1 C, Sig=254,4 Ref=off



MSD1 TIC, MS File ES-API, Pos, Scan, Frag: 70



Ion 569, MSD1 569, Target Mass 568 +H Positive, EIC=568.7:569.7



Integration Results for DAD1 B, Sig=214,4 Ref=off

RetTim	Width	Area	Height	Area%	MS (+)
1.03	0.02	2.63	2.89	0.34	261
1.04	0.01	2.61	3.49	0.33	261
1.06	0.01	2.05	3.05	0.26	261
1.19	0.01	771.82	929.01	98.86	285
1.29	0.01	1.57	1.81	0.20	285

Integration Results for DAD1 C, Sig=254,4 Ref=off

RetTim	Width	Area	Height	Area%	MS (+)
1.03	0.01	0.72	1.09	0.11	261
1.04	0.02	1.75	1.76	0.25	261
1.06	0.01	0.99	1.38	0.14	261
1.16	0.01	0.45	0.76	0.07	261
1.19	0.01	680.69	826.71	98.97	285
1.29	0.02	2.10	1.94	0.31	285
1.31	0.01	1.07	1.20	0.16	285

Integration Results for MSD1 TIC, MS File

RetTim	Width	Area	Height	Area%	MS (+)
1.21	0.03	673249.56	394632.03	100.00	285

Ret. Time: 1.21

<<<< POSITIVE SPECTRA >>>>

ES-API Positive

