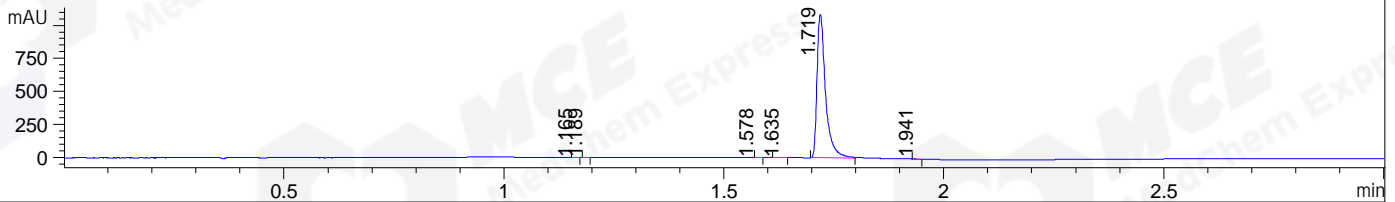
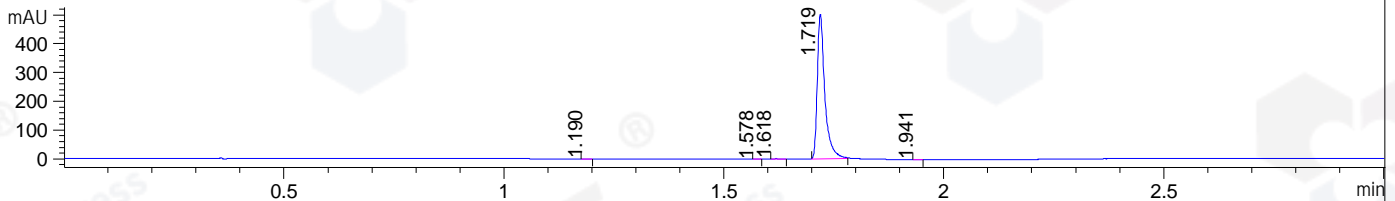


File ..\DATA\2019\20190507\570\CPK2019-506-22130.D Tgt Mass (CHM):
Injection Date : 7 May 19 4:46 pm +0800 Seq. Line : 8
Sample Name : CPK2019-506-22130 Location : P1-E-05
Acq. Operator : LQ_1052 Inj : 1
Spec. Reported : MS Integration Inj Volume : 1 ul
Acq. Method : D:\Chem32\1\data\2019\20190507\570\1-POS-3MIN-1.M
Analysis Method : D:\CHEM32\1\DATA\2019\20190507\570\1-POS-3MIN-1.M
Catalog No : HY-12365 Batch# 22130
Method Info : Mobile Phase: A: water(0.01%TFA) B:ACN(0.01%TFA)
Gradient: 5% to 95%B within 1.3 min
Flow Rate :1.8ml/min
Column :SunFire C18, 4.6*50mm,3.5um A-RP-322
Oven Temperature : 45

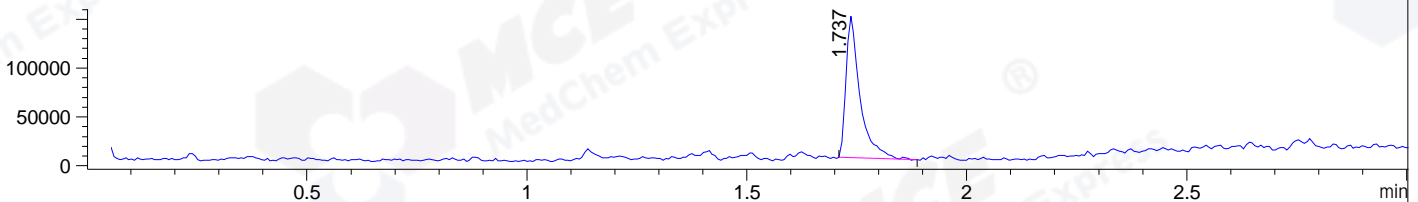
DAD1 B, Sig=214,4 Ref=off



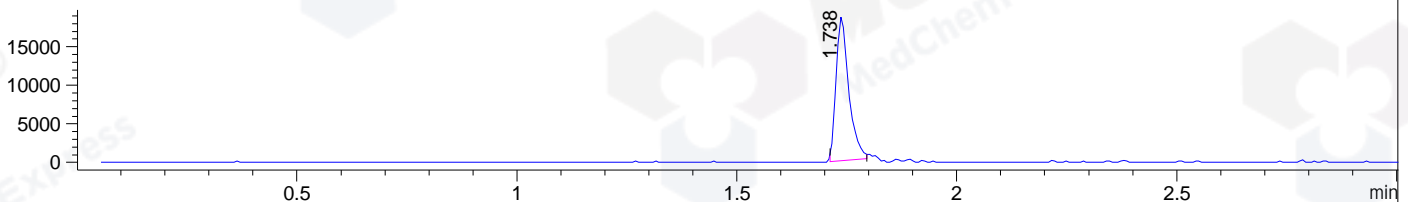
DAD1 C, Sig=254,4 Ref=off



MSD1 TIC, MS File ES-API, Pos, Scan, Frag: 70



Ion 545.7, MSD1 545.7, Target Mass 544.7 +H Positive, EIC=545.4:546.4



Integration Results for DAD1 B, Sig=214,4 Ref=off

RetTim	Width	Area	Height	Area%	MS (+)
1.17	0.01	0.68	0.81	0.05	194
1.19	0.01	0.54	0.88	0.04	194
1.58	0.01	0.68	0.95	0.05	ND
1.64	0.03	2.55	1.55	0.17	516
1.72	0.02	1463.98	1086.85	99.65	545
1.94	0.02	0.66	0.67	0.05	ND

Integration Results for DAD1 C, Sig=254,4 Ref=off

RetTim	Width	Area	Height	Area%	MS (+)
1.19	0.01	0.35	0.47	0.06	ND
1.58	0.01	0.18	0.32	0.03	ND
1.62	0.02	0.93	0.85	0.16	516
1.72	0.02	599.78	502.46	99.71	545
1.94	0.02	0.25	0.25	0.04	ND

Integration Results for MSD1 TIC, MS File

1.74 0.03 320508.16 144998.13 100.00 545

RetTim	Width	Area	Height	Area%	MS (+)
--------	-------	------	--------	-------	--------

Ret. Time: 1.74

<<<< POSITIVE SPECTRA >>>>

ES-API Positive

