

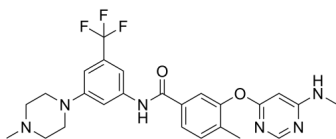
TL4-12

Cat. No.: HY-123714
Batch No.: 345458
CAS No.: 1620820-12-3
Molecular Formula: C₂₅H₂₇F₃N₆O₂

ANALYTICAL DATA

Theoretical: C(58.93%)、H(5.54%)、N(16.49%)
Result: C(59.06%)、H(5.42%)、N(16.47%)

Chemical Structure:



Caution: Product has not been fully validated for medical applications. For research use only.

Tel: 609-228-6898

Fax: 609-228-5909

E-mail: tech@MedChemExpress.com

Address: 1 Deer Park Dr, Suite Q, Monmouth Junction, NJ 08852, USA