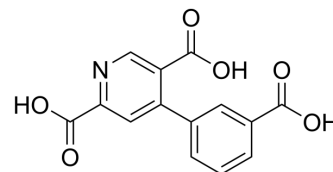


4-CPPC

Cat. No.:	HY-123814		
CAS No.:	29553-70-6		
Molecular Formula:	C ₁₄ H ₉ NO ₆		
Molecular Weight:	287.22		
Target:	Macrophage migration inhibitory factor (MIF)		
Pathway:	Immunology/Inflammation		
Storage:	Powder	-20°C	3 years
		4°C	2 years
	In solvent	-80°C	6 months
		-20°C	1 month



SOLVENT & SOLUBILITY

In Vitro

DMSO : 100 mg/mL (348.17 mM; Need ultrasonic)

Concentration	Solvent	Mass		
		1 mg	5 mg	10 mg
1 mM		3.4817 mL	17.4083 mL	34.8165 mL
5 mM		0.6963 mL	3.4817 mL	6.9633 mL
10 mM		0.3482 mL	1.7408 mL	3.4817 mL

Please refer to the solubility information to select the appropriate solvent.

BIOLOGICAL ACTIVITY

Description

4-CPPC is a potent, reversible and selective MIF-2 inhibitor with K_i values of 431, 33 μM for MIF-1, MIF-2, respectively^[1].

IC₅₀ & Target

K_i: 431 μM (MIF-1); 33 μM (MIF-2)^[1]

REFERENCES

[1]. Pantouris G, et al. Structural Plasticity in the C-Terminal Region of Macrophage Migration Inhibitory Factor-2 Is Associated with an Induced Fit Mechanism for a Selective Inhibitor. *Biochemistry*. 2018 Jul 3;57(26):3599-3605.

Caution: Product has not been fully validated for medical applications. For research use only.

Tel: 609-228-6898

Fax: 609-228-5909

E-mail: tech@MedChemExpress.com

Address: 1 Deer Park Dr, Suite Q, Monmouth Junction, NJ 08852, USA