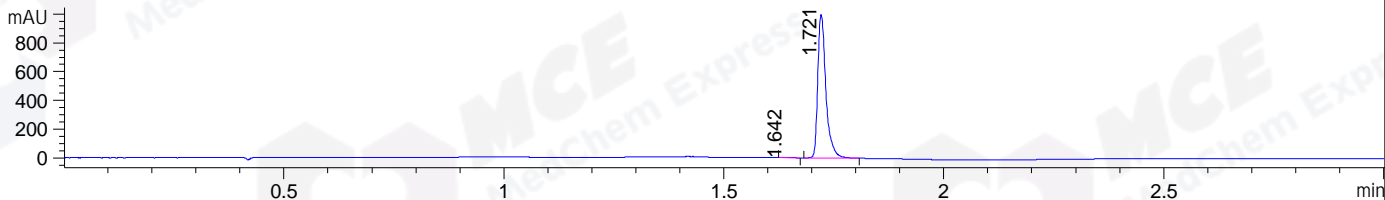
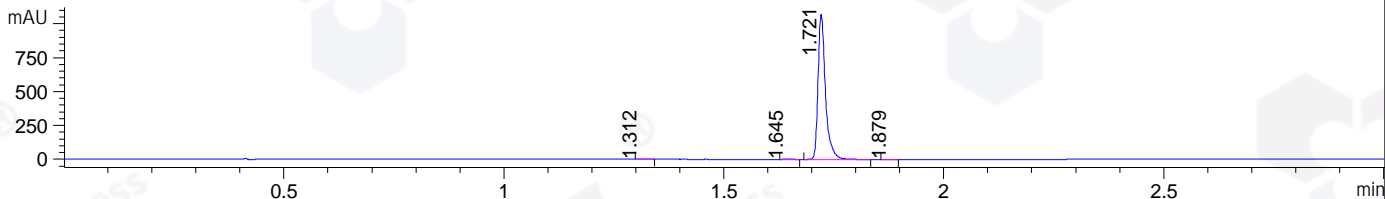


File ..1\DATA\2019\20190721\652\BIZ2019-722-CXL1.D Tgt Mass (CHM):  
 Injection Date : 22 Jul 19 2:03 pm +0800 Seq. Line : 49  
 Sample Name : BIZ2019-722-CXL1 Location : P1-A-02  
 Acq. Operator : ZJ\_1432 Inj : 1  
 Spec. Reported : MS Integration Inj Volume : 1 ul  
 Acq. Method : D:\Chem32\1\data\2019\20190721\652\1-POS-3MIN.M  
 Analysis Method : D:\CHEM32\1\DATA\2019\20190721\652\1-POS-3MIN.M  
 Catalog No : HY-123844 Batch#43711  
 Method Info : Mobile Phase: A: water(0.01%TFA) B:ACN(0.01%TFA)  
 Gradient: 5% to 95%B within 1.3 min  
 Flow Rate :1.8ml/min  
 Column :SunFire C18, 4.6\*50mm,3.5um A-RP-433  
 Oven Temperature : 45□

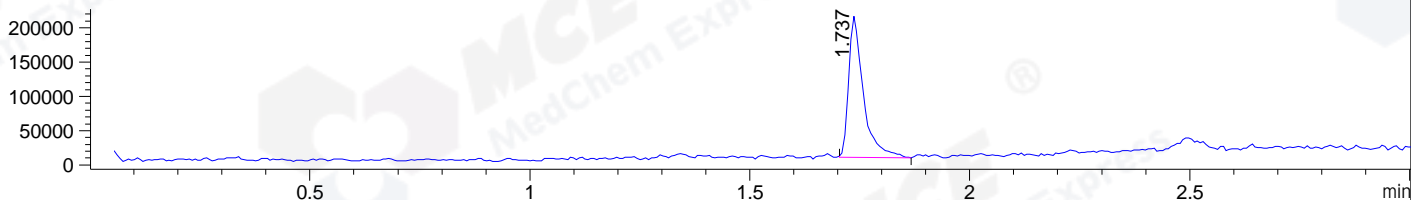
DAD1 B, Sig=214,4 Ref=off



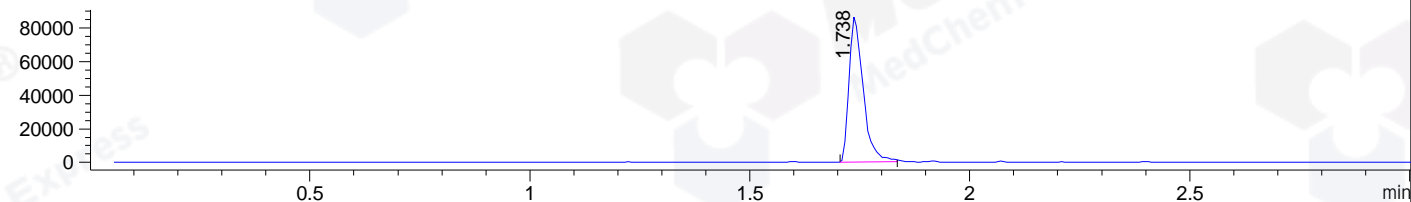
DAD1 C, Sig=254,4 Ref=off



MSD1 TIC, MS File ES-API, Pos, Scan, Frag: 70



Ion 699.18, MSD1 699.18, Target Mass 698.18 +H Positive, EIC=698.88:699.88



Integration Results for DAD1 B, Sig=214,4 Ref=off

RetTim	Width	Area	Height	Area%	MS (+)
1.64	0.03	2.46	1.62	0.19	ND
1.72	0.02	1279.85	996.87	99.81	699

Integration Results for DAD1 C, Sig=254,4 Ref=off

RetTim	Width	Area	Height	Area%	MS (+)
1.31	0.03	1.46	0.83	0.12	ND
1.64	0.02	1.58	1.22	0.12	ND
1.72	0.02	1261.53	1071.46	99.71	699
1.88	0.02	0.63	0.47	0.05	721

Integration Results for MSD1 TIC, MS File

RetTim	Width	Area	Height	Area%	MS (+)
1.74	0.03	485060.31	206370.73	100.00	699

Ret. Time: 1.74

<<<< POSITIVE SPECTRA >>>>

ES-API Positive

