

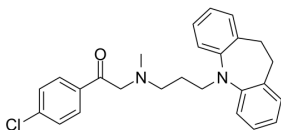
## Lofepamine

Cat. No.: HY-12390  
CAS No.: 23047-25-8  
Batch No.: 101244  
Chemical Name: Ethanone, 1-(4-chlorophenyl)-2-[[3-(10,11-dihydro-5H-dibenz[b,f]azepin-5-yl)propyl]methylamino]-

### PHYSICAL AND CHEMICAL PROPERTIES

Molecular Formula: C<sub>26</sub>H<sub>27</sub>ClN<sub>2</sub>O  
Molecular Weight: 418.96  
Storage: Powder      -20°C    3 years  
                                 4°C      2 years  
                         In solvent   -80°C   6 months  
                                 -20°C   1 month

### Chemical Structure:



### ANALYTICAL DATA

Appearance: White to yellow (Solid)  
<sup>1</sup>H NMR Spectrum: Consistent with structure  
LCMS: Consistent with structure  
Purity (HPLC): 99.68%  
Conclusion: The product has been tested and complies with the given specifications.

**Caution: Product has not been fully validated for medical applications. For research use only.**

Tel: 609-228-6898

Fax: 609-228-5909

E-mail: tech@MedChemExpress.com

Address: 1 Deer Park Dr, Suite Q, Monmouth Junction, NJ 08852, USA