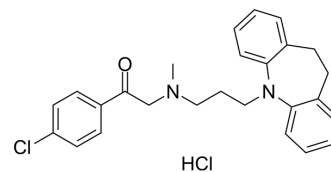


## Lofepamine hydrochloride

Cat. No.:	HY-12390A
CAS No.:	26786-32-3
Molecular Formula:	C <sub>26</sub> H <sub>28</sub> Cl <sub>2</sub> N <sub>2</sub> O
Molecular Weight:	455.42
Target:	Others
Pathway:	Others
Storage:	Please store the product under the recommended conditions in the Certificate of Analysis.



### BIOLOGICAL ACTIVITY

#### Description

Lofepamine (Lopramine) hydrochloride is a potent tricyclic antidepressant and is extensively metabolised to Desipramine. The antidepressant activity of Lofepamine hydrochloride stems from the facilitation of noradrenergic neurotransmission by uptake inhibition. Lofepamine hydrochloride may also potentiate serotonergic neurotransmission by inhibition of the neuronal uptake of serotonin and the enzyme tryptophan pyrrolase. Lofepamine hydrochloride has significant anxiolytic efficacy in addition to its antidepressant properties<sup>[1]</sup>.

### REFERENCES

[1]. Lancaster SG, et al. Lofepamine. A review of its pharmacodynamic and pharmacokinetic properties, and therapeutic efficacy in depressive illness. *Drugs*. 1989 Feb;37(2):123-40.

**Caution: Product has not been fully validated for medical applications. For research use only.**

Tel: 609-228-6898

Fax: 609-228-5909

E-mail: tech@MedChemExpress.com

Address: 1 Deer Park Dr, Suite Q, Monmouth Junction, NJ 08852, USA