

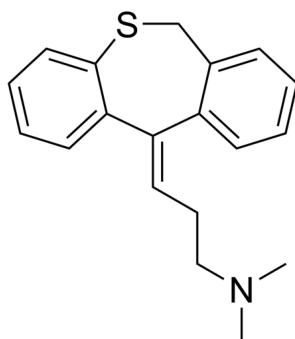
Dothiepin

Cat. No.: HY-12394
Batch No.: 429488
CAS No.: 113-53-1
Molecular Formula: C₁₉H₂₁NS

ANALYTICAL DATA

Theoretical: C(77.24%), H(7.16%), N(4.74%)
Result: C(76.46%), H(7.33%), N(4.74%)

Chemical Structure:



Caution: Product has not been fully validated for medical applications. For research use only.

Tel: 609-228-6898

Fax: 609-228-5909

E-mail: tech@MedChemExpress.com

Address: 1 Deer Park Dr, Suite Q, Monmouth Junction, NJ 08852, USA