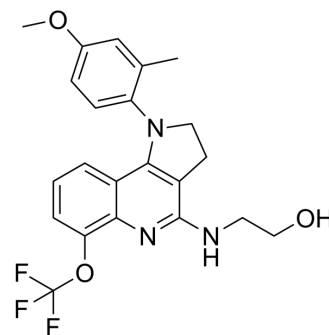


KR-60436

Cat. No.:	HY-124158
CAS No.:	220853-65-6
Molecular Formula:	C ₂₂ H ₂₂ F ₃ N ₃ O ₃
Molecular Weight:	433.42
Target:	Proton Pump
Pathway:	Membrane Transporter/Ion Channel
Storage:	Please store the product under the recommended conditions in the Certificate of Analysis.



BIOLOGICAL ACTIVITY

Description

KR-60436 is a reversible H⁺/K⁺-ATPase inhibitor. KR-60436 can potentially inhibit the metabolism of CYP1A2 substrates^[1].

REFERENCES

[1]. Ji HY, et al. Characterization of human liver cytochrome P450 enzymes involved in the metabolism of a new H⁺/K⁺-ATPase inhibitor KR-60436. *Toxicol Lett.* 2005 Jan 15;155(1):103-14.

Caution: Product has not been fully validated for medical applications. For research use only.

Tel: 609-228-6898

Fax: 609-228-5909

E-mail: tech@MedChemExpress.com

Address: 1 Deer Park Dr, Suite Q, Monmouth Junction, NJ 08852, USA