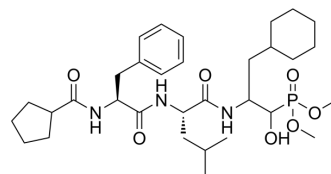


## SQ 32602

Cat. No.:	HY-124202
CAS No.:	125399-14-6
Molecular Formula:	C <sub>32</sub> H <sub>52</sub> N <sub>3</sub> O <sub>7</sub> P
Molecular Weight:	621.74
Target:	Cathepsin
Pathway:	Metabolic Enzyme/Protease
Storage:	Please store the product under the recommended conditions in the Certificate of Analysis.



### BIOLOGICAL ACTIVITY

Description	SQ 32602 is an inhibitor of cathepsin E, with the IC <sub>50</sub> of 88 nM <sup>[1]</sup> .
IC <sub>50</sub> & Target	Cathepsin E 88 nM (IC <sub>50</sub> )

### REFERENCES

[1]. J E Bird, et al. The effects of novel cathepsin E inhibitors on the big endothelin pressor response in conscious rats. *Biochem Biophys Res Commun.* 1992 Jan 15;182(1):224-31.

**Caution: Product has not been fully validated for medical applications. For research use only.**

Tel: 609-228-6898

Fax: 609-228-5909

E-mail: [tech@MedChemExpress.com](mailto:tech@MedChemExpress.com)

Address: 1 Deer Park Dr, Suite Q, Monmouth Junction, NJ 08852, USA