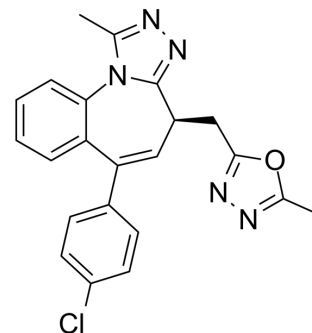


## BET-BAY 002 (S enantiomer)

Cat. No.:	HY-12421B		
CAS No.:	2070009-49-1		
Molecular Formula:	C <sub>22</sub> H <sub>18</sub> ClN <sub>5</sub> O		
Molecular Weight:	403.86		
Target:	Epigenetic Reader Domain		
Pathway:	Epigenetics		
Storage:	Powder	-20°C	3 years
		4°C	2 years
	In solvent	-80°C	6 months
		-20°C	1 month



### BIOLOGICAL ACTIVITY

#### Description

BET-BAY 002 S enantiomer is the S-enantiomer of BET-BAY 002. BET-BAY 002 is a BET inhibitor.

### REFERENCES

- [1]. Evans DM, et al. Exposure time versus cytotoxicity for anticancer agents. *Cancer Chemother Pharmacol.* 2019 Aug;84(2):359-371.
- [2]. Jung M, et al. Targeting BET bromodomains for cancer treatment. *Epigenomics.* 2015;7(3):487-501.

**Caution: Product has not been fully validated for medical applications. For research use only.**

Tel: 609-228-6898

Fax: 609-228-5909

E-mail: [tech@MedChemExpress.com](mailto:tech@MedChemExpress.com)

Address: 1 Deer Park Dr, Suite Q, Monmouth Junction, NJ 08852, USA