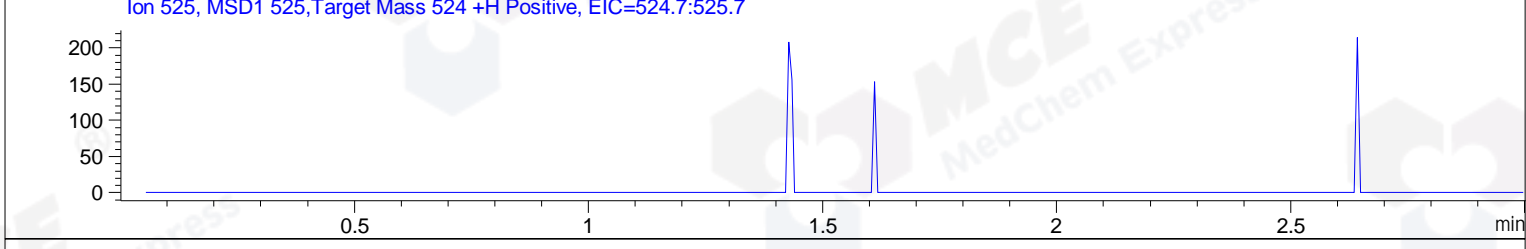
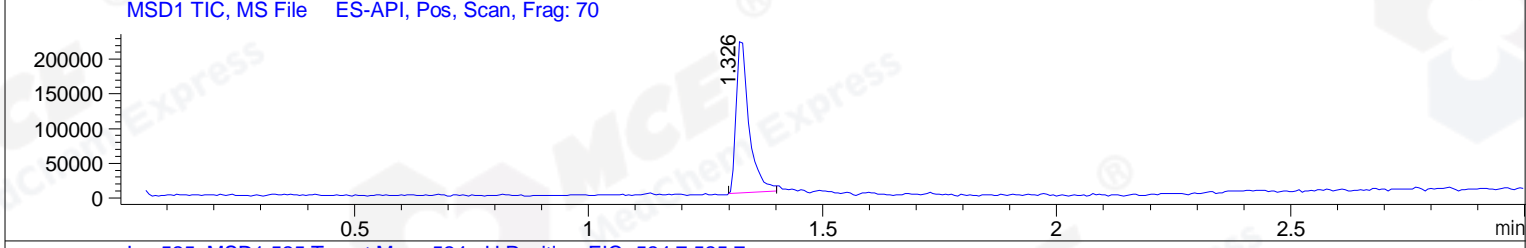
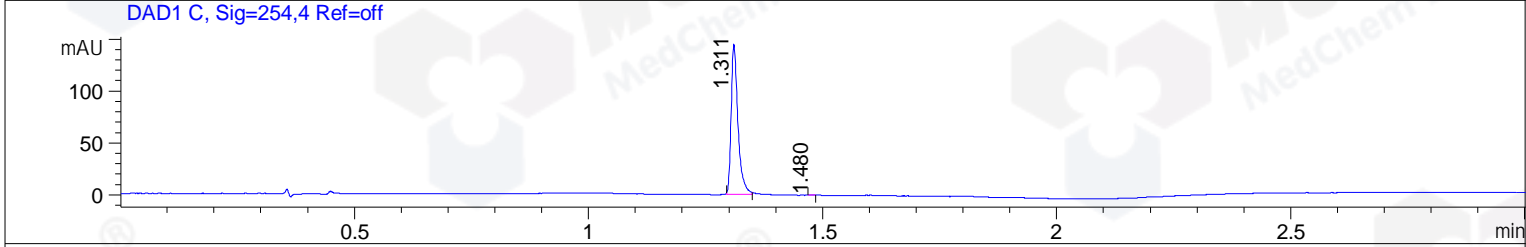
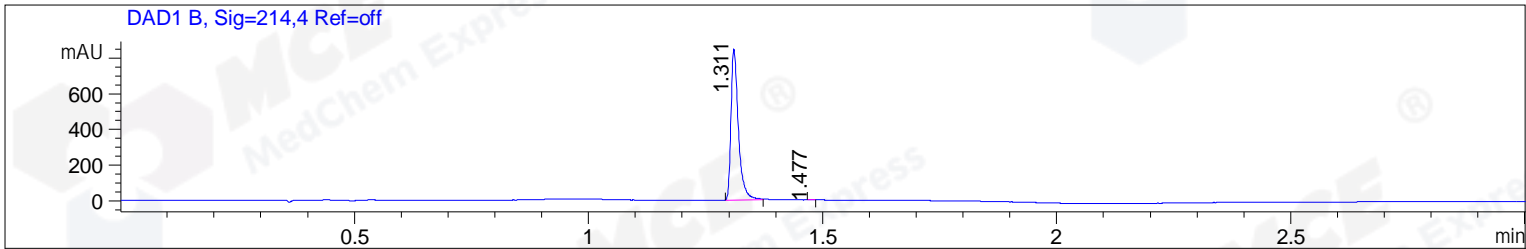


File ..\DATA\2019\20190515\578\BIZ2019-514-WYQ10.D Tgt Mass (CHM):
 Injection Date : 15 May 19 10:44 am +0800 Seq. Line : 23
 Sample Name : BIZ2019-514-WYQ10 Location : P1-E-08
 Acq. Operator : LQ_1052 Inj : 1
 Spec. Reported : MS Integration Inj Volume : 1 ul
 Acq. Method : D:\Chem32\1\data\2019\20190515\578\1-POS-3MIN.M
 Analysis Method : D:\CHEM32\1\DATA\2019\20190515\578\1-POS-3MIN.M
 Catalog No : HY-12426A Batch# 41061-20190514
 Method Info : Mobile Phase: A: water(0.01%TFA) B:ACN(0.01%TFA)
 Gradient: 5% to 95%B within 1.3 min
 Flow Rate :1.8ml/min
 Column :SunFire C18, 4.6*50mm,3.5um A-RP-322
 Oven Temperature : 45



Integration Results for DAD1 B, Sig=214,4 Ref=off

RetTim	Width	Area	Height	Area%	MS (+)
1.31	0.02	929.32	844.94	99.94	489
1.48	0.01	0.56	0.94	0.06	489

Integration Results for DAD1 C, Sig=254,4 Ref=off

RetTim	Width	Area	Height	Area%	MS (+)
1.31	0.02	145.75	144.69	99.87	489
1.48	0.01	0.19	0.27	0.13	489

Integration Results for MSD1 TIC, MS File

RetTim	Width	Area	Height	Area%	MS (+)
1.33	0.03	417958.59	229222.52	100.00	489

Ret. Time: 1.33

<<<< POSITIVE SPECTRA >>>>

ES-API Positive

