

## T-3364366

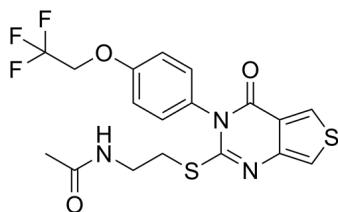
Cat. No.: HY-124346  
Batch No.: 212769  
CAS No.: 1356354-09-0  
Molecular Formula: C<sub>18</sub>H<sub>16</sub>F<sub>3</sub>N<sub>3</sub>O<sub>3</sub>S<sub>2</sub>

### ANALYTICAL DATA

Theoretical: C(48.75%), H(3.64%), N(9.48%)

Result: C(48.79%), H(3.59%), N(9.48%)

Chemical Structure:



**Caution: Product has not been fully validated for medical applications. For research use only.**

Tel: 609-228-6898

Fax: 609-228-5909

E-mail: [tech@MedChemExpress.com](mailto:tech@MedChemExpress.com)

Address: 1 Deer Park Dr, Suite Q, Monmouth Junction, NJ 08852, USA