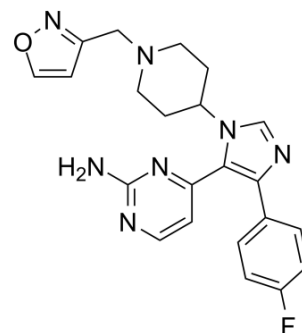


PF-5006739

Cat. No.:	HY-12443
CAS No.:	1293395-67-1
Molecular Formula:	C ₂₂ H ₂₂ FN ₇ O
Molecular Weight:	419.45
Target:	Casein Kinase
Pathway:	Cell Cycle/DNA Damage; Stem Cell/Wnt
Storage:	Please store the product under the recommended conditions in the COA.



BIOLOGICAL ACTIVITY

Description

PF-5006739 is a potent and selective inhibitor of CK1δ/ε with IC₅₀s of 3.9 nM and 17.0 nM, respectively. PF-5006739 is a potential therapeutic agent for a range of psychiatric disorders with low nanomolar in vitro potency for CK1δ/ε and high kinome selectivity. PF-5006739 attenuates opioid drug-seeking behavior in a rodent operant reinstatement model in animals in a dose-dependent manner^[1]. PF-5006739 improves glucose tolerance in both diet-induced obesity (DIO) and genetic (ob/ob) mice models of obesity^[2].

IC₅₀ & Target

CK1δ	CK1ε
3.9 nM (IC ₅₀)	17.0 nM (IC ₅₀)

REFERENCES

- [1]. Wager TT, et al. Casein kinase 1δ/ε inhibitor PF-5006739 attenuates opioid drug-seeking behavior. ACS Chem Neurosci. 2014 Dec 17;5(12):1253-65.
- [2]. Cunningham PS, et al. Targeting of the circadian clock via CK1δ/ε to improve glucose homeostasis in obesity. Sci Rep. 2016 Jul 21;6:29983.

Caution: Product has not been fully validated for medical applications. For research use only.

Tel: 609-228-6898

Fax: 609-228-5909

E-mail: tech@MedChemExpress.com

Address: 1 Deer Park Dr, Suite Q, Monmouth Junction, NJ 08852, USA