

File ..20200916 2020-09-16 08-32-50\HP8302-001-3.D Tgt Mass (CHM) :

Injection Date : 16 Sep 20 5:49 pm +0800 Seq. Line : 142

Sample Name : HP8302-001-3 Location : P2-E-05

Acq. Operator : SYSTEM Inj : 1

Spec. Reported : MS Integration Inj Volume : 0.2 ul

Acq. Method : D:\LCMS03\Data\20200916\20200916 2020-09-16 08-32-50\1-POS-UPLC2.0MIN(0.8ML) -

Analysis Method : D:\LCMS03\Data\20200916\20200916 2020-09-16 08-32-50\1-POS-UPLC2.0MIN(0.8ML) -

Catalog No : HY-124607B

Method Info : Mobile Phase: A: water(0.01%TFA) B:ACN(0.01%TFA)

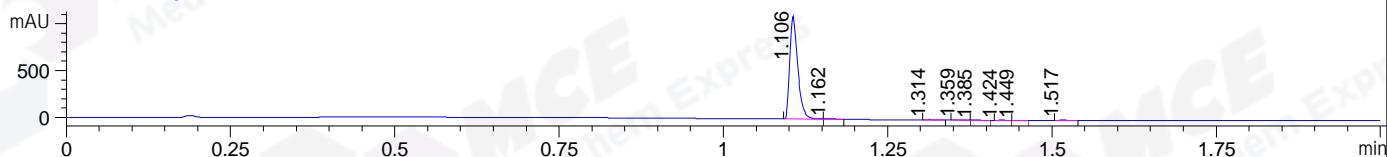
Gradient: 5% to 95%B within 0.6 min

Flow Rate : 0.8ml/min

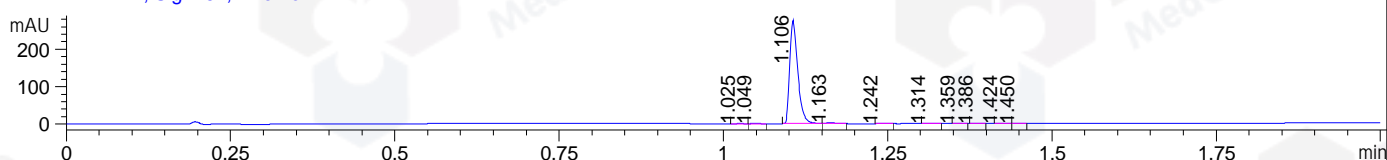
Column : Poroshell 120 EC- C18, 2.1\*50mm,1.9um A-RP-530

Oven Temperature : 45C

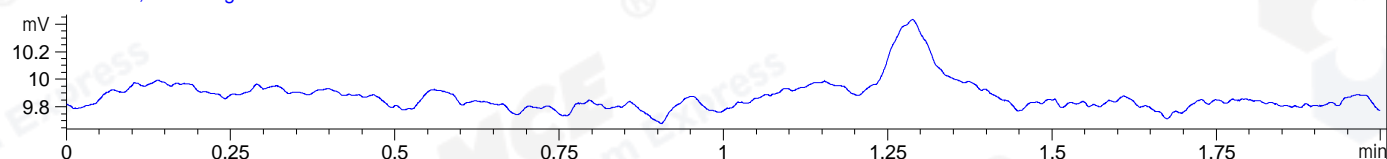
DAD1 A, Sig=214,4 Ref=off



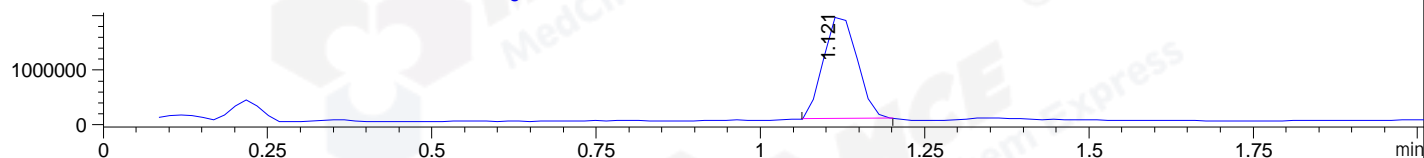
DAD1 B, Sig=254,4 Ref=off



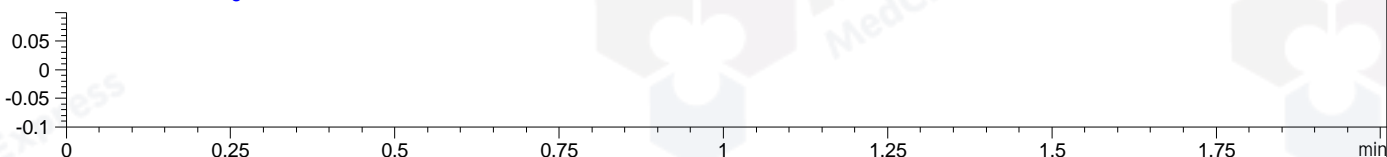
ELS1 A, ELSD Signal



MSD1 TIC, MS File ES-API, Pos, Scan, Frag: 70



Ion 1, MSD1 1, Target Mass 0 +H Positive, EIC=0.7:1.7



Integration Results for DAD1 A, Sig=214,4 Ref=off

RetTim	Width	Area	Height	Area%	MS (+)
1.11	0.01	931.83	1098.25	98.02	378
1.16	0.01	7.42	8.50	0.78	378
1.31	0.01	4.17	4.66	0.44	408
1.36	0.01	1.76	2.26	0.18	422
1.39	0.01	0.89	1.09	0.09	422
1.42	0.01	1.18	1.62	0.12	161
1.45	0.01	0.79	1.06	0.08	161
1.52	0.01	2.62	3.15	0.28	161

Integration Results for DAD1 B, Sig=254,4 Ref=off

RetTim	Width	Area	Height	Area%	MS (+)
1.03	0.01	0.20	0.24	0.08	161
1.05	0.01	0.30	0.35	0.12	161
1.11	0.01	234.47	275.83	98.06	378
1.16	0.01	2.51	2.81	1.05	378
1.24	0.01	0.41	0.59	0.17	161
1.31	0.01	0.49	0.66	0.21	408

1.36	0.01	0.22	0.32	0.09	422
1.39	0.01	0.19	0.23	0.08	422
1.42	0.01	0.21	0.28	0.09	161
1.45	0.01	0.12	0.17	0.05	161

## Integration Results for ELS1 A, ELSD Signal

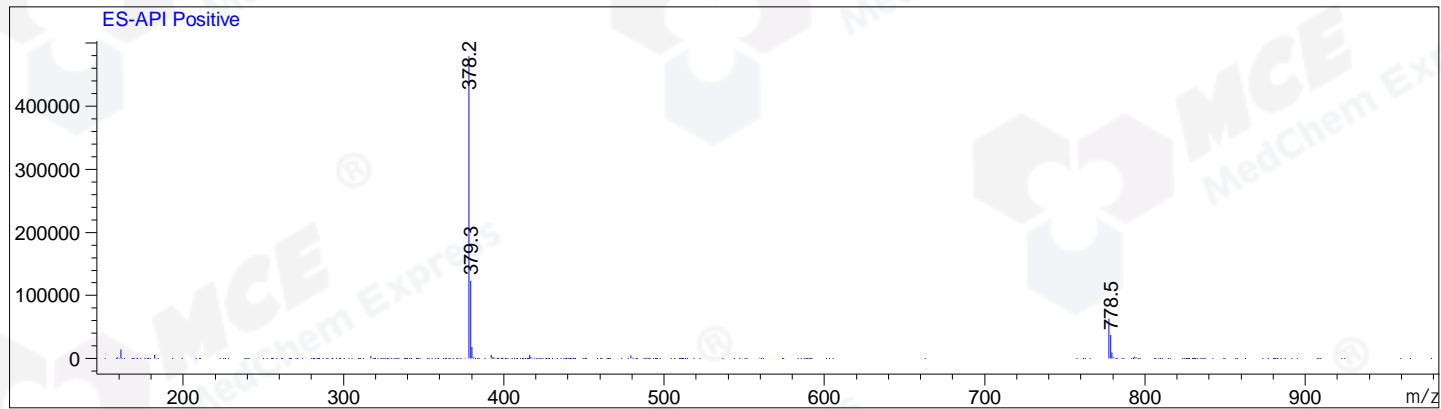
RetTim	Width	Area	Height	Area%	MS (+)
--------	-------	------	--------	-------	--------

## Integration Results for MSD1 TIC, MS File

RetTim	Width	Area	Height	Area%	MS (+)
1.12	0.06	6600746.00	1948870.13	100.00	378

Ret. Time: 1.12

<<<< POSITIVE SPECTRA >>>>



\*\*\* End of Report \*\*\*