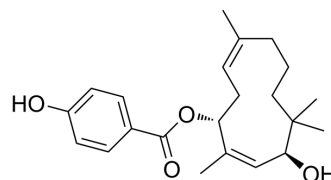


Juniferdin

| | |
|--------------------|---|
| Cat. No.: | HY-124786 |
| CAS No.: | 74724-29-1 |
| Molecular Formula: | C ₂₂ H ₃₀ O ₄ |
| Molecular Weight: | 358.47 |
| Target: | HIV |
| Pathway: | Anti-infection |
| Storage: | Please store the product under the recommended conditions in the Certificate of Analysis. |



BIOLOGICAL ACTIVITY

| | |
|-------------|--|
| Description | Juniferdin is an inhibitor of Protein disulfide isomerase (PDI) (IC ₅₀ =3.5 μM), aiming to block HIV transmission. Juniferdin is cytotoxic, and also inhibits platelet aggregation ^[1] . |
| In Vitro | Juniferdin results irreversibility in platelet aggregation with an activity of 100% after the washing the platelets ^[1] . MCE has not independently confirmed the accuracy of these methods. They are for reference only. |

REFERENCES

[1]. Khodier C, et al. Identification of ML359 as a Small Molecule Inhibitor of Protein Disulfide Isomerase. 2013 Apr 12 [updated 2014 Sep 18]. In: Probe Reports from the NIH Molecular Libraries Program [Internet]. Bethesda (MD): National Center for Biotechnology Information (US); 2010-.

Caution: Product has not been fully validated for medical applications. For research use only.

Tel: 609-228-6898

Fax: 609-228-5909

E-mail: tech@MedChemExpress.com

Address: 1 Deer Park Dr, Suite Q, Monmouth Junction, NJ 08852, USA