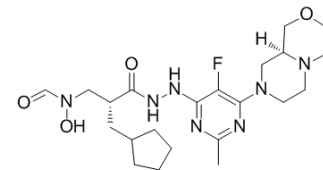


## Lanopepden

Cat. No.:	HY-12480		
CAS No.:	1152107-25-9		
Molecular Formula:	C <sub>22</sub> H <sub>34</sub> FN <sub>7</sub> O <sub>4</sub>		
Molecular Weight:	479.55		
Target:	Bacterial		
Pathway:	Anti-infection		
Storage:	Powder	-20°C	3 years
		4°C	2 years
	In solvent	-80°C	6 months
		-20°C	1 month



### BIOLOGICAL ACTIVITY

<b>Description</b>	Lanopepden (GSK 1322322) is a peptide deformylase inhibitor active against <i>Staphylococcus aureus</i> strains with MICs of 1 and 1 mg/L for ATCC 29213 and ATCC 25923 strain, respectively <sup>[1]</sup> .
--------------------	---

### REFERENCES

[1]. Peyrusson F, et al. Cellular pharmacokinetics and intracellular activity of the novel peptide deformylase inhibitor GSK1322322 against *Staphylococcus aureus* laboratory and clinical strains with various resistance phenotypes: studies with human THP-1 monocytes and J774 murine macrophages. *Antimicrob Agents Chemother.* 2015 Sep;59(9):5747-60.

**Caution: Product has not been fully validated for medical applications. For research use only.**

Tel: 609-228-6898

Fax: 609-228-5909

E-mail: tech@MedChemExpress.com

Address: 1 Deer Park Dr, Suite Q, Monmouth Junction, NJ 08852, USA