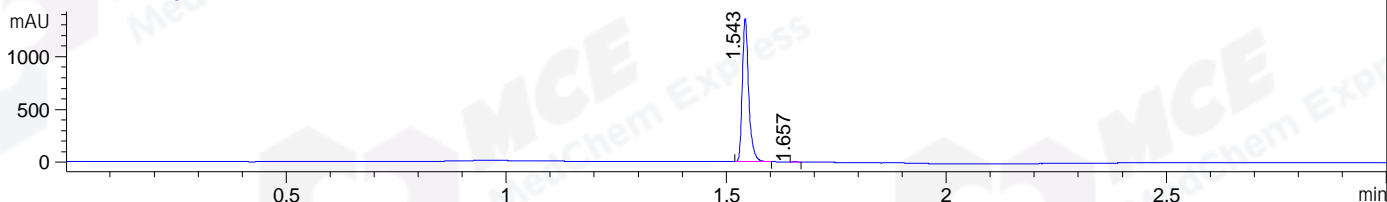
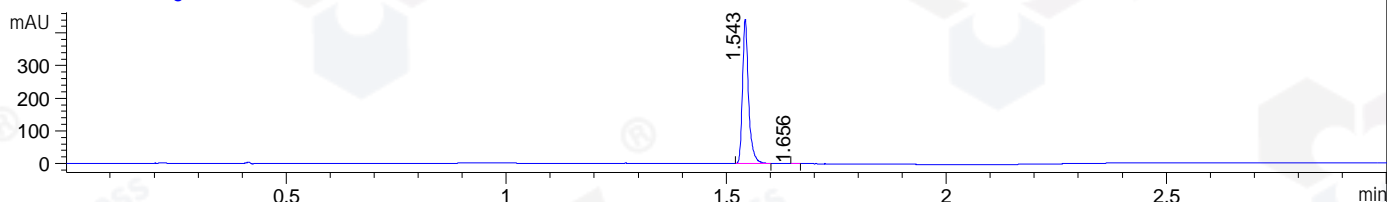


File ..DATA\2020\20201020\1130\BIZ2020-O17-SCH3-.D Tgt Mass (CHM):
Injection Date : 20 Oct 20 4:44 pm +0800 Seq. Line : 89
Sample Name : BIZ2020-O17-SCH3 Location : P1-A-06
Acq. Operator : zyj_1547 Inj : 1
Spec. Reported : MS Integration Inj Volume : 0.5 ul
Acq. Method : D:\Chem32\1\data\2020\20201020\1130\1-POS-3MIN.M
Analysis Method : D:\CHEM32\1\DATA\2020\20201020\1130\1-POS-3MIN.M
CAS NO. : 882256-55-5
Method Info : Mobile Phase: A: water(0.01%TFA) B:ACN(0.01%TFA)
Gradient: 5% to 95%B within 1.3 min
Flow Rate :1.8ml/min
Column :SunFire C18, 4.6*50mm,3.5um A-RP-624

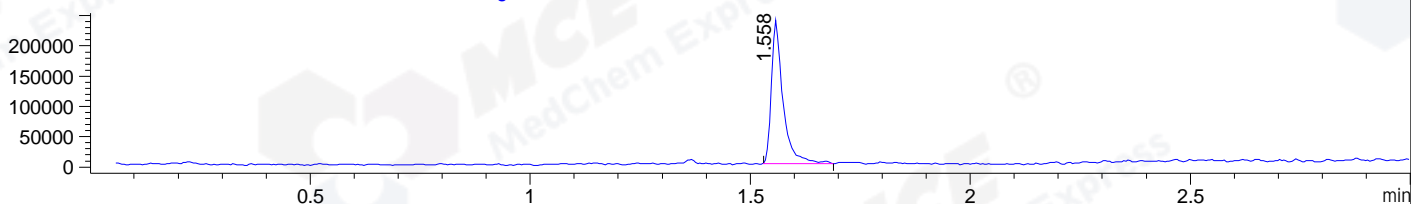
DAD1 B, Sig=214,4 Ref=off



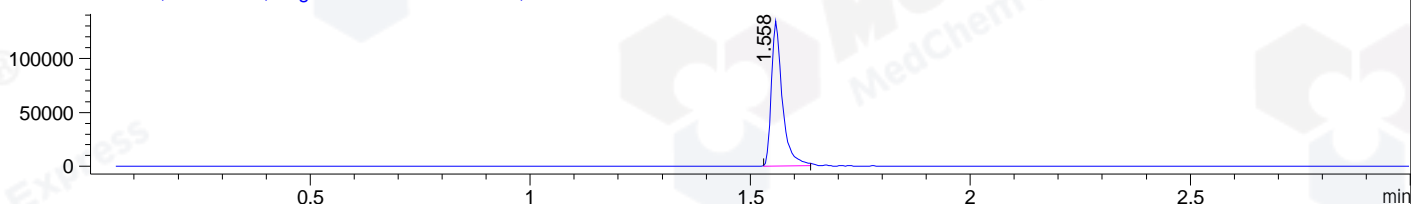
DAD1 C, Sig=254,4 Ref=off



MSD1 TIC, MS File ES-API, Pos, Scan, Frag: 70



Ion 321, MSD1 321, Target Mass 320 +H Positive, EIC=320.7:321.7



Integration Results for DAD1 B, Sig=214,4 Ref=off

RetTim	Width	Area	Height	Area%	MS(+)
1.54	0.02	1368.18	1357.31	99.87	321
1.66	0.01	1.83	2.39	0.13	ND

Integration Results for DAD1 C, Sig=254,4 Ref=off

RetTim	Width	Area	Height	Area%	MS(+)
1.54	0.02	421.38	443.23	99.88	321
1.66	0.01	0.50	0.67	0.12	ND

Integration Results for MSD1 TIC, MS File

RetTim	Width	Area	Height	Area%	MS(+)
1.56	0.03	439460.16	237392.25	100.00	321

Ret. Time: 1.56

<<<< POSITIVE SPECTRA >>>>

ES-API Positive

