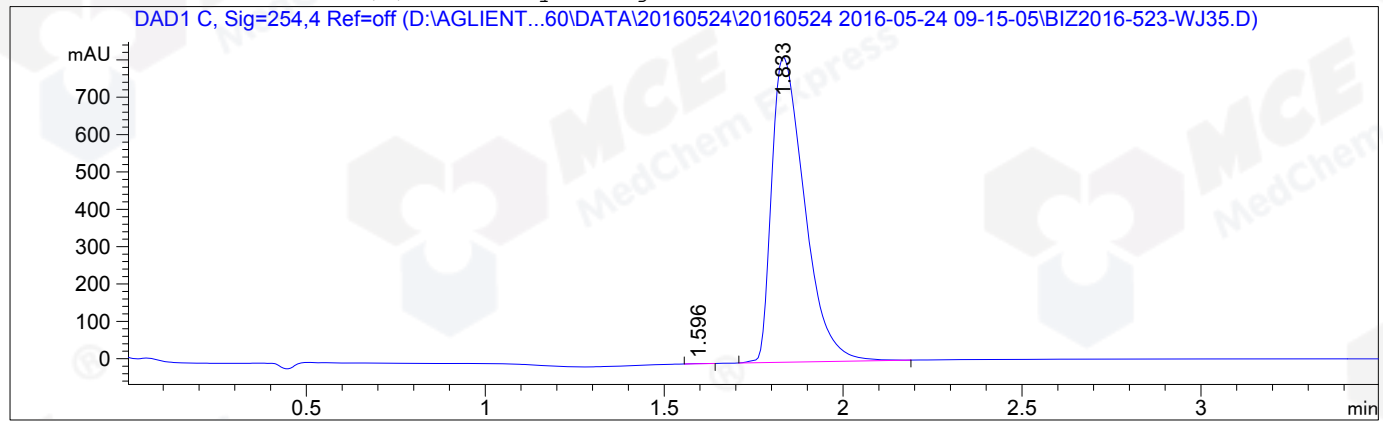


=====
Acq. Operator : Su Xiao Ying(LCMS-02) Seq. Line : 73
Acq. Instrument : HY-LCMS-02 Location : P1-A-03
Injection Date : 5/24/2016 3:45:22 PM Inj : 1
Inj Volume : 3.000 µl
Acq. Method : D:\AGLIENT 1260\DATA\20160524\20160524 2016-05-24 09-15-05\100-1000MS+3MIN-1.5_(0.02%FA).M
Last changed : 5/24/2016 9:15:05 AM by Su Xiao Ying(LCMS-02)
Analysis Method : D:\AGLIENT 1260\DATA\20160524\20160524 2016-05-24 09-15-05\100-1000MS+3MIN-1.5_(0.02%FA).M (Sequence Method)
Last changed : 5/24/2016 3:55:24 PM by Su Xiao Ying(LCMS-02)
(modified after loading)
Method Info : HY-365_5H01RS,M,A-RP-108, 210nm,23min

Catalog No: HY-12501A Batch#20491
A-RP-134

Additional Info : Peak(s) manually integrated



=====
Area Percent Report
=====

Sorted By : Signal
Multiplier : 1.0000
Dilution : 1.0000
Do not use Multiplier & Dilution Factor with ISTDs

Signal 1: DAD1 C, Sig=254,4 Ref=off

Peak #	RetTime [min]	Type	Width [min]	Area [mAU*s]	Height [mAU]	Area %
1	1.596	MM	0.0484	1.44340	4.97366e-1	0.0277
2	1.833	MM	0.1059	5205.91309	819.41626	99.9723

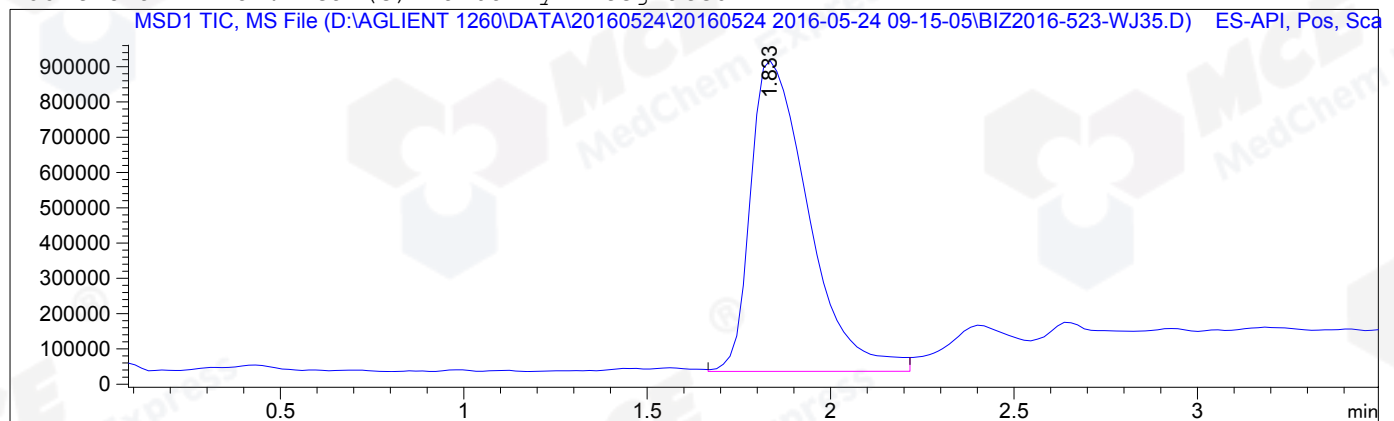
Totals : 5207.35649 819.91363

=====
*** End of Report ***
=====

=====
Acq. Operator : Su Xiao Ying(LCMS-02) Seq. Line : 73
Acq. Instrument : HY-LCMS-02 Location : P1-A-03
Injection Date : 5/24/2016 3:45:22 PM Inj : 1
Inj Volume : 3.000 µl
Acq. Method : D:\AGLIENT 1260\DATA\20160524\20160524 2016-05-24 09-15-05\100-1000MS+3MIN-
1.5_(0.02%FA).M
Last changed : 5/24/2016 9:15:05 AM by Su Xiao Ying(LCMS-02)
Analysis Method : D:\AGLIENT 1260\DATA\20160524\20160524 2016-05-24 09-15-05\100-1000MS+3MIN-
1.5_(0.02%FA).M (Sequence Method)
Last changed : 5/24/2016 3:54:07 PM by Su Xiao Ying(LCMS-02)
(modified after loading)
Method Info : HY-365_5H01RS,M,A-RP-108, 210nm,23min

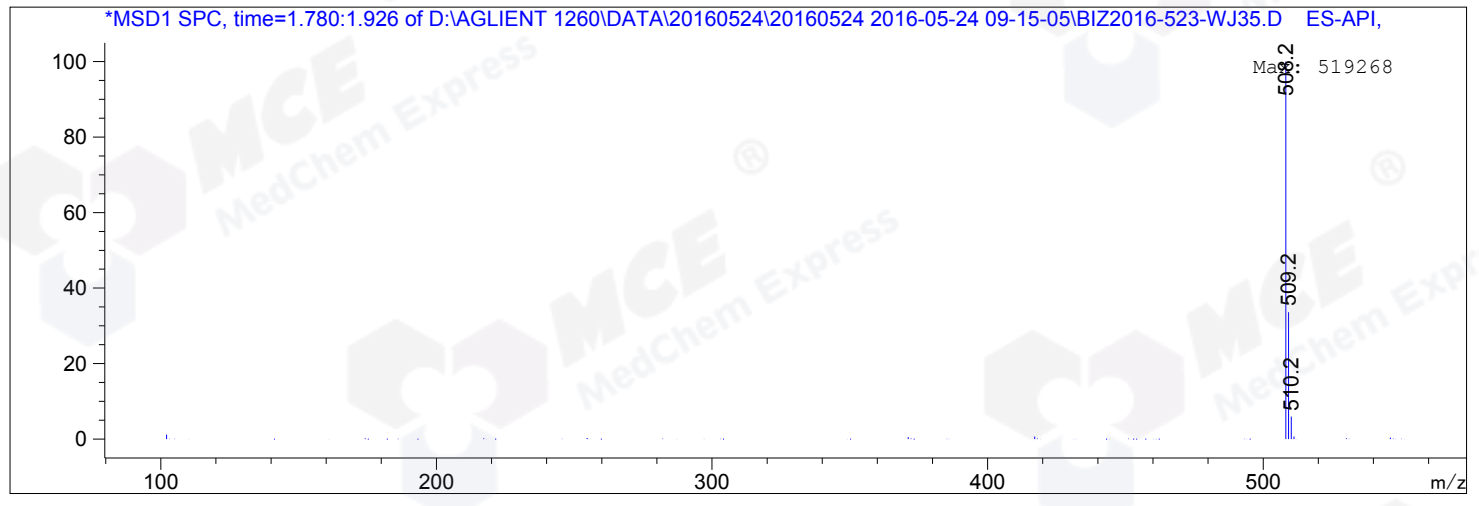
Catalog No: HY-12501A Batch#20491
A-RP-134

Additional Info : Peak(s) manually integrated



MS Signal: MSD1 TIC, MS File, ES-API, Pos, Scan, Frag: 50
Spectra averaged over upper half of peaks.
Noise Cutoff: 1000 counts.
Reportable Ion Abundance: > 10%.

Retention Time (MS)	MS Area	Mol. Weight or Ion
1.833	9674736	509.20 I 508.20 I



*** End of Report ***