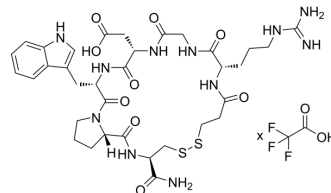


## Batifiban TFA

<b>Cat. No.:</b>	HY-125053A
<b>Molecular Formula:</b>	$C_{34}H_{47}N_{11}O_9S_2 \cdot xC_2HF_3O_2$
<b>Sequence:</b>	{Mpa}-Arg-Gly-Asp-Trp-Pro-Cys-NH <sub>2</sub> (Disulfide bridge: Mpa1-Cys7)
<b>Sequence Shortening:</b>	{Mpa}-RGDWPC-NH <sub>2</sub> (Disulfide bridge: Mpa1-Cys7)
<b>Target:</b>	Glycoprotein VI
<b>Pathway:</b>	Immunology/Inflammation
<b>Storage:</b>	Please store the product under the recommended conditions in the Certificate of Analysis.



### SOLVENT & SOLUBILITY

<b>In Vitro</b>	H <sub>2</sub> O : 100 mg/mL (Need ultrasonic)
-----------------	--

### BIOLOGICAL ACTIVITY

<b>Description</b>	Batifiban TFA, a cyclic peptide, is an antagonist of platelet glycoprotein GP $\text{VI}$ / $\text{VIa}$ and inhibits platelet aggregation. Batifiban blocks the binding of circulating vitronectin to integrin $\alpha\text{v}\beta 3$ <sup>[1]</sup> .
<b>IC<sub>50</sub> &amp; Target</b>	Glycoprotein GP $\text{VI}$ / $\text{VIa}$

### REFERENCES

[1]. Chen H, et al. Safety, pharmacokinetic and pharmacodynamic studies of batifiban injection following single- and multiple-dose administration to healthy Chinese subjects. J Huazhong Univ Sci Technolog Med Sci. 2009 Feb;29(1):12-8. [Content Brief]

**Caution: Product has not been fully validated for medical applications. For research use only.**

Tel: 609-228-6898

Fax: 609-228-5909

E-mail: tech@MedChemExpress.com

Address: 1 Deer Park Dr, Suite Q, Monmouth Junction, NJ 08852, USA