

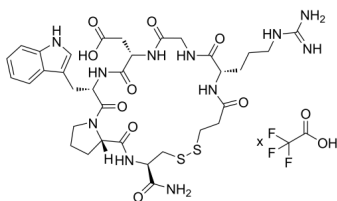
## Batifiban (TFA)

Cat. No.: HY-125053A  
Batch No.: 310897  
Molecular Formula: C<sub>34</sub>H<sub>47</sub>N<sub>11</sub>O<sub>9</sub>S<sub>2</sub>·xC<sub>2</sub>HF<sub>3</sub>O<sub>2</sub>

### ANALYTICAL DATA

Theoretical: C(-), H(-), N(-), Peptide Content(≥60.0%)  
Result: C(44.40%), H(5.03%), N(16.23%), Peptide Content(86.1%)

Chemical Structure:



**Caution: Product has not been fully validated for medical applications. For research use only.**

Tel: 609-228-6898

Fax: 609-228-5909

E-mail: tech@MedChemExpress.com

Address: 1 Deer Park Dr, Suite Q, Monmouth Junction, NJ 08852, USA