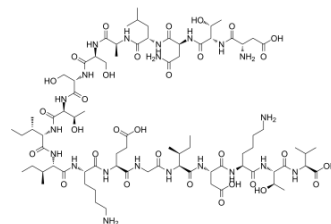


Peptide M

Cat. No.:	HY-12523		
CAS No.:	110652-62-5		
Molecular Formula:	C ₈₁ H ₁₄₁ N ₂₁ O ₃₁		
Molecular Weight:	1905.11		
Sequence:	Asp-Thr-Asn-Leu-Ala-Ser-Ser-Thr-Ile-Ile-Lys-Glu-Gly-Ile-Asp-Lys-Thr-Val		
Sequence Shortening:	DTNLSASTIIKEGIDKTV		
Target:	Others		
Pathway:	Others		
Storage:	Powder	-80°C	2 years
		-20°C	1 year
	In solvent	-80°C	6 months
		-20°C	1 month



BIOLOGICAL ACTIVITY

Description

Peptide M is a 50 aa synthetic peptide derived from a streptococcal M protein containing an additional C-terminal cysteine residue. Peptide M binds monomeric and dimeric human IgA of both subclasses (IgA1 and IgA2) with high specificity and affinity.

Caution: Product has not been fully validated for medical applications. For research use only.

Tel: 609-228-6898

Fax: 609-228-5909

E-mail: tech@MedChemExpress.com

Address: 1 Deer Park Dr, Suite Q, Monmouth Junction, NJ 08852, USA