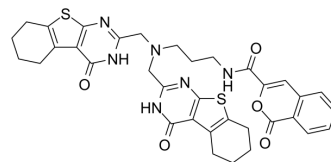


## LEM-14-1189

Cat. No.:	HY-125244
CAS No.:	2987501-17-5
Molecular Formula:	C <sub>35</sub> H <sub>34</sub> N <sub>6</sub> O <sub>5</sub> S <sub>2</sub>
Molecular Weight:	682.81
Target:	Histone Methyltransferase
Pathway:	Epigenetics
Storage:	Please store the product under the recommended conditions in the Certificate of Analysis.



### BIOLOGICAL ACTIVITY

Description	LEM-14-1189, a LEM-14 (HY-114340) derivative, is a NSDs inhibitor with IC <sub>50</sub> s of 418 μM (NSD1), 111 μM (NSD2), and 60 μM (NSD3), respectively. The NSDs, histone lysine methyltransferases (HMTases), are oncoproteins, drivers of a number of tumors. LEM-14-1189 can be used for multiple myeloma (MM) research <sup>[1]</sup> .
IC <sub>50</sub> & Target	418 μM (NSD1), 111 μM (NSD2), and 60 μM (NSD3) <sup>[1]</sup>

### REFERENCES

[1]. Shen Y, et al. Identification of LEM-14 inhibitor of the oncoprotein NSD2. *Biochem Biophys Res Commun.* 2019 Jan 1;508(1):102-108.

**Caution: Product has not been fully validated for medical applications. For research use only.**

Tel: 609-228-6898

Fax: 609-228-5909

E-mail: tech@MedChemExpress.com

Address: 1 Deer Park Dr, Suite Q, Monmouth Junction, NJ 08852, USA