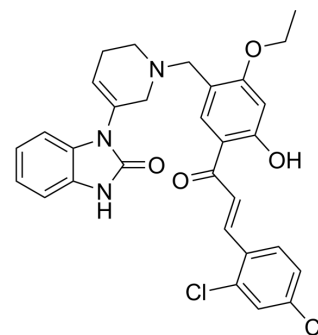


## SHP2 inhibitor LY6

Cat. No.:	HY-125257
CAS No.:	2296718-09-5
Molecular Formula:	C <sub>30</sub> H <sub>27</sub> Cl <sub>2</sub> N <sub>3</sub> O <sub>4</sub>
Molecular Weight:	564.46
Target:	Phosphatase; SHP2
Pathway:	Metabolic Enzyme/Protease; Protein Tyrosine Kinase/RTK
Storage:	Please store the product under the recommended conditions in the Certificate of Analysis.



### BIOLOGICAL ACTIVITY

Description	SHP2 inhibitor LY6 (LY6) is potent and selective inhibitor of SHP2, with an IC <sub>50</sub> of 9.8 μM. SHP2 inhibitor LY6 can inhibits SHP2-mediated cell signaling and proliferation <sup>[1]</sup> .
IC <sub>50</sub> & Target	IC50: 9.8 μM (SHP2) <sup>[1]</sup>

### REFERENCES

[1]. Wu X, et, al. Small Molecule Inhibitor that Stabilizes the Autoinhibited Conformation of the Oncogenic Tyrosine Phosphatase SHP2. J Med Chem. 2019 Feb 14;62(3):1125-1137.

**Caution: Product has not been fully validated for medical applications. For research use only.**

Tel: 609-228-6898

Fax: 609-228-5909

E-mail: tech@MedChemExpress.com

Address: 1 Deer Park Dr, Suite Q, Monmouth Junction, NJ 08852, USA