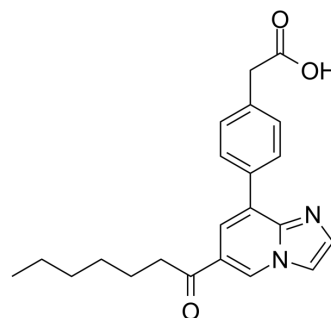


SPT-IN-1

Cat. No.:	HY-125351
CAS No.:	1933533-18-6
Molecular Formula:	C ₂₂ H ₂₄ N ₂ O ₃
Molecular Weight:	364.44
Target:	Others
Pathway:	Others
Storage:	Please store the product under the recommended conditions in the Certificate of Analysis.



BIOLOGICAL ACTIVITY

Description	SPT-IN-1 (compound 1) is an orally active and potent SPT (serine palmitoyl transferase) inhibitor, with an IC ₅₀ of 5.19 nM for hSPT1. SPT-IN-1 can be used for type 2 diabetes and dyslipidemia research ^[1] .
IC₅₀ & Target	IC ₅₀ : 5.19 nM (hSPT1) ^[1]
In Vitro	SPT-IN-1 (compound 1) exhibits a dose-dependent inhibition of C14-serine incorporation into ceramide in MCF-7 cells, with EC ₅₀ of 0.98 μM ^[1] . MCE has not independently confirmed the accuracy of these methods. They are for reference only.
In Vivo	SPT-IN-1 (compound 1) (Sprague Dawley rats, 0-60 mg/kg, Orally, twice daily for 7 days) dose-dependently reduces plasma ceramides, reduces triglycerides and raises HDL in cholesterol/cholic acid fed rats ^[1] . MCE has not independently confirmed the accuracy of these methods. They are for reference only.

REFERENCES

[1]. Genin MJ, et al. Imidazopyridine and Pyrazolopiperidine Derivatives as Novel Inhibitors of Serine Palmitoyl Transferase. J Med Chem. 2016;59(12):5904-5910.

Caution: Product has not been fully validated for medical applications. For research use only.

Tel: 609-228-6898

Fax: 609-228-5909

E-mail: tech@MedChemExpress.com

Address: 1 Deer Park Dr, Suite Q, Monmouth Junction, NJ 08852, USA