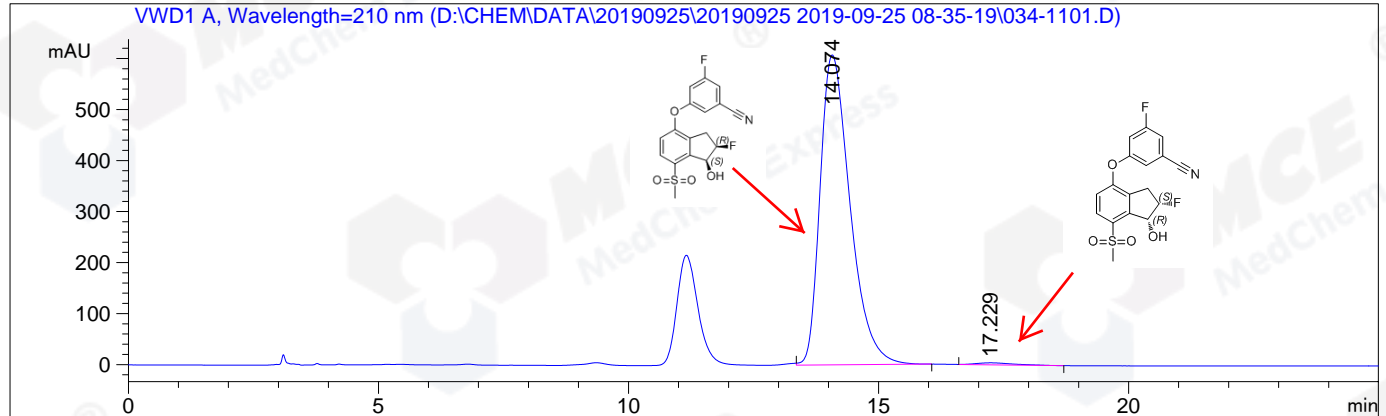


```

=====
Acq. Operator   : WZH                               Seq. Line :   11
Acq. Instrument : HPLC-04                           Location  : Vial 34
Injection Date  : 9/25/2019 11:13:59 AM             Inj       :    1
                                                    Inj Volume: 5.0 µl
Different Inj Volume from Sequence !   Actual Inj Volume : 2.0 µl
Acq. Method     : D:\CHEM\DATA\20190925\20190925 2019-09-25 08-35-19\OD,70,210NM,C2.M
Last changed    : 9/25/2019 11:12:41 AM by WZH
                (modified after loading)
Analysis Method : D:\CHEM\METHODS\OD,70,210NM,C2.M
Last changed    : 7/30/2019 5:05:25 PM by WZH
Catalog No     : HY-125840 Batch#55624
                C-NP-25
=====
  
```

Additional Info : Peak(s) manually integrated



Area Percent Report

```

=====
Sorted By      :      Signal
Multiplier:    :      1.0000
Dilution:      :      1.0000
Use Multiplier & Dilution Factor with ISTDs
=====
  
```

Signal 1: VWD1 A, Wavelength=210 nm

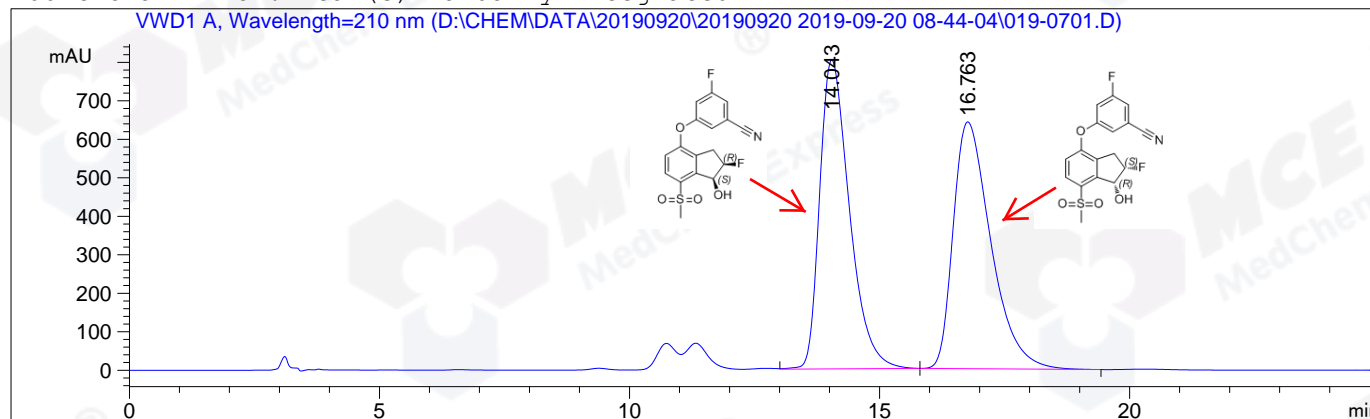
Peak #	RetTime [min]	Type	Width [min]	Area mAU*s	Height [mAU]	Area %
1	14.074	FM R	0.6938	2.52894e4	607.53168	99.2008
2	17.229	BB	0.6273	203.74831	3.90723	0.7992

Totals : 2.54932e4 611.43890

*** End of Report ***

=====
Acq. Operator : WZH Seq. Line : 7
Acq. Instrument : HPLC-04 Location : Vial 19
Injection Date : 9/20/2019 11:56:33 AM Inj : 1
Inj Volume : 5.0 µl
Acq. Method : D:\CHEM\DATA\20190920\20190920 2019-09-20 08-44-04\OD, 70, 210NM, C2.M
Last changed : 9/20/2019 12:03:46 PM by WZH
(modified after loading)
Analysis Method : D:\CHEM\METHODS\OD, 70, 210NM, C2.M
Last changed : 9/20/2019 12:23:12 PM by WZH
(modified after loading)
Catalog No : HY-125840 Batch#55624
C-NP-25
=====

Additional Info : Peak(s) manually integrated



=====
Area Percent Report
=====

Sorted By : Signal
Multiplier: : 1.0000
Dilution: : 1.0000
Use Multiplier & Dilution Factor with ISTDs

Signal 1: VWD1 A, Wavelength=210 nm

Peak #	RetTime [min]	Type	Width [min]	Area mAU*s	Height [mAU]	Area %
1	14.043	VB	0.6328	3.31214e4	802.65717	49.7169
2	16.763	BB	0.7986	3.34987e4	641.35022	50.2831

Totals : 6.66201e4 1444.00739

=====
*** End of Report ***
=====