

File ..91230 2019-12-30 08-31-51\MXY7443-019-1_3.D Tgt Mass (CHM):

Injection Date : 30 Dec 19 12:29 pm +0800 Seq. Line : 62

Sample Name : MXY7443-019-1_3 Location : P1-F-02

Acq. Operator : SYSTEM Inj : 1

Spec. Reported : MS Integration Inj Volume : 0.2 ul

Acq. Method : D:\LCMS03\Data\20191230\20191230 2019-12-30 08-31-51\1-POS-UPLC2.0MIN(0.8ML)

Analysis Method : D:\LCMS03\Data\20191230\20191230 2019-12-30 08-31-51\1-POS-UPLC2.0MIN(0.8ML)

Catalog No : HY-125876 Batch#58510

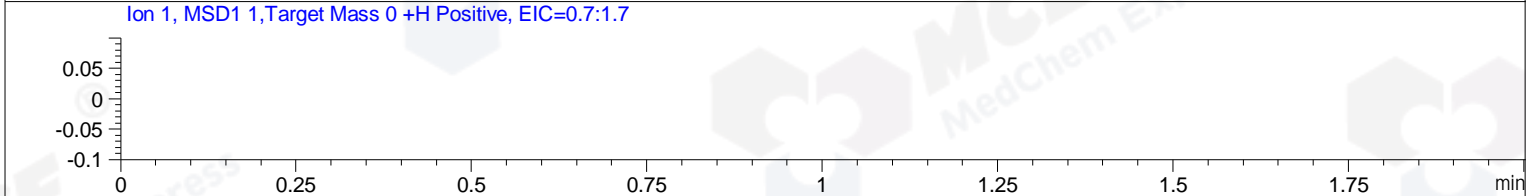
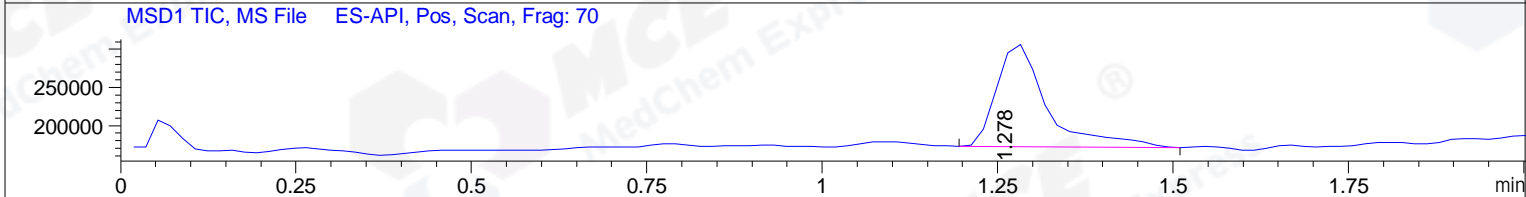
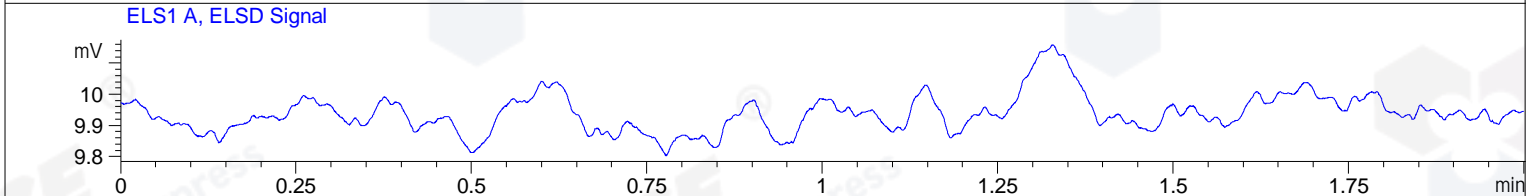
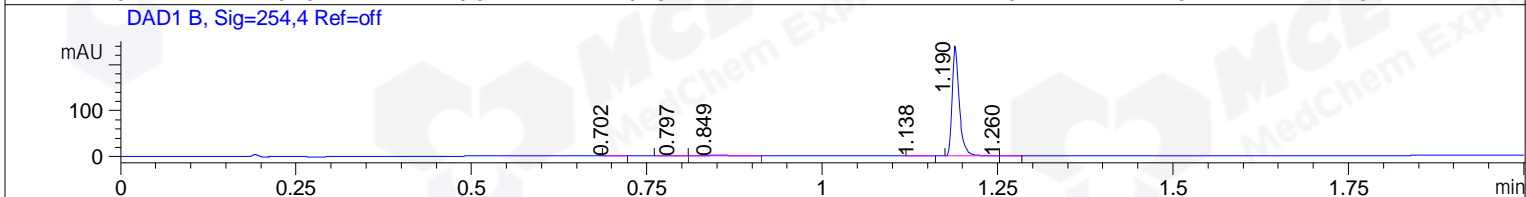
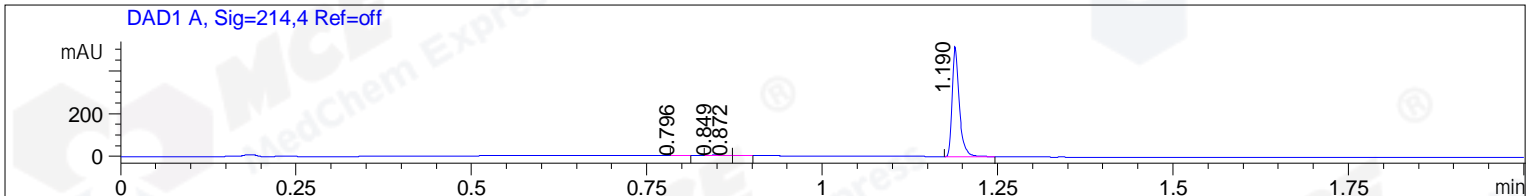
Method Info : Mobile Phase: A: water(0.01%TFA) B:ACN(0.01%TFA)

Gradient: 5% to 95%B within 0.6 min

Flow Rate :0.8ml/min

Column :Poroshell 120 EC- C18, 2.1*50mm,1.9um A-RP-463

Oven Temperature : 45C



Integration Results for DAD1 A, Sig=214,4 Ref=off

RetTim	Width	Area	Height	Area%	MS (+)
0.80	0.01	0.31	0.44	0.08	145
0.85	0.02	4.00	4.24	1.08	145
0.87	0.02	0.68	0.65	0.19	145
1.19	0.01	364.54	515.89	98.65	145

Integration Results for DAD1 B, Sig=254,4 Ref=off

RetTim	Width	Area	Height	Area%	MS (+)
0.70	0.02	0.13	0.12	0.07	145
0.80	0.02	0.18	0.15	0.10	145
0.85	0.02	2.21	1.71	1.28	145
1.14	0.02	0.12	0.12	0.07	145
1.19	0.01	169.60	239.49	98.28	145
1.26	0.02	0.33	0.35	0.19	145

Integration Results for ELS1 A, ELSD Signal

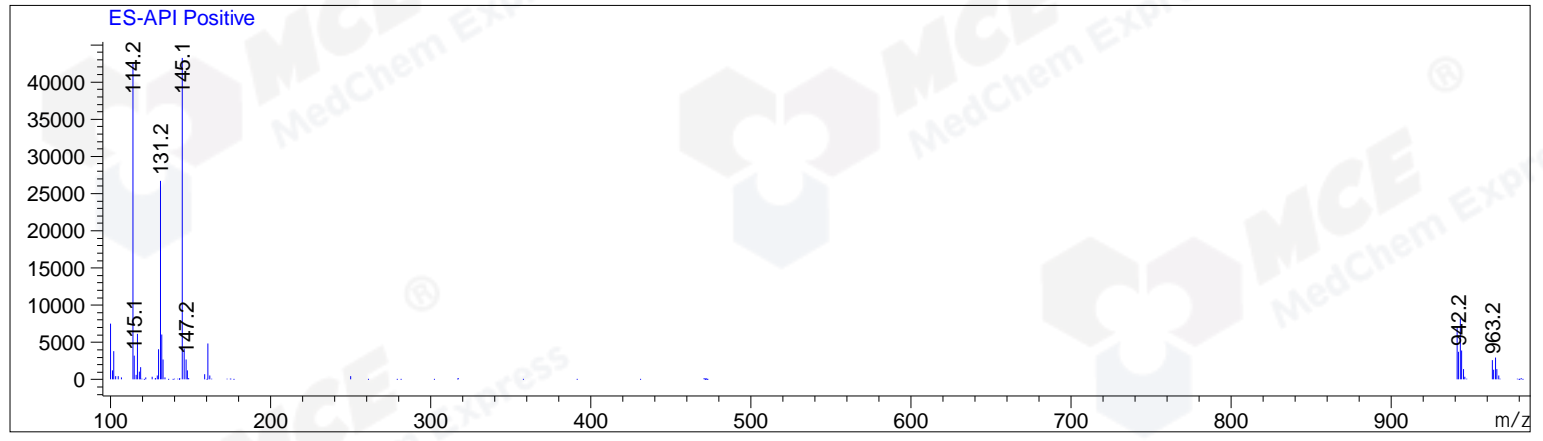
RetTim	Width	Area	Height	Area%	MS (+)
--------	-------	------	--------	-------	--------

Integration Results for MSD1 TIC, MS File

RetTim	Width	Area	Height	Area%	MS (+)
1.28	0.07	672311.13	135428.03	100.00	145

Ret. Time: 1.28

<<<< POSITIVE SPECTRA >>>>



*** End of Report ***